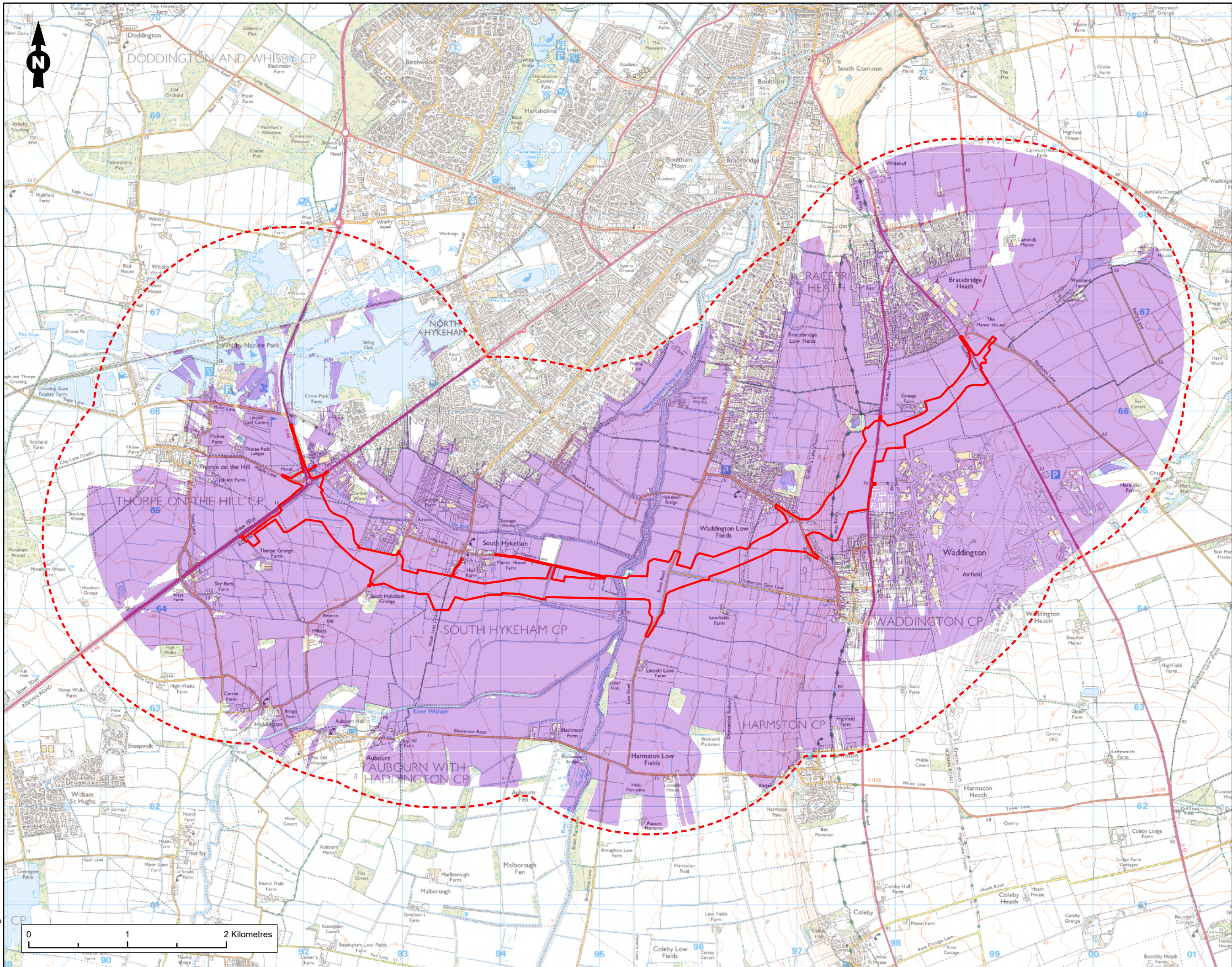


TEP drawing number: C9455 03.007A



COPYRIGHT RAMBOLL UK LIMITED. ALL RIGHTS RESERVED. THIS DOCUMENT IS ISSUED FOR THE PARTY WHO COMMISSIONED IT AND FOR THE SPECIFIC PURPOSES CONNECTED WITH THE PROJECT ONLY. IT SHOULD NOT BE RELIED UPON BY ANY OTHER PARTY OR USED FOR ANY OTHER PURPOSE. RAMBOLL ACCEPTS NO RESPONSIBILITY OR LIABILITY WHICH MAY ARISE FROM RELIANCE OR USE OF THIS DOCUMENT OR THE DATA CONTAINED HEREIN BY ANY OTHER PARTY OR FOR ANY OTHER PURPOSE.

Notes: Site boundary from NHRR-RAM-HGN-HYKE-M2-CH-00901 (Rev P15)

Legend:

- Site boundary
- 2km study area
- Area from which the proposed development can be theoretically seen

Note:

This Zone of Theoretical Visibility (ZTV) has been generated using Esri ArcGIS Spatial Analyst extension. The Digital Terrain Model (DTM) has been derived from OS Terrain 5 dataset with an accuracy in the order of $\pm 2.0\text{m}$. Earth curvature has been included in the ZTV calculation and refraction of light has been applied using ESRI default settings. The ZTV has been generated from a viewing height of 2m above ground level. This falls within recommendations by "Visual Representation of Windfarms" prepared for Scottish Natural Heritage (SNH) July 2014 - Version 2.2.

The ZTV is based on development in the site boundary up to 77.375m in height, totalling 82.325m with HGV traffic measuring 4.95m on average.

The ZTV shows the screening effect of features within the landscape such as settlements and woodland blocks using a height value of 8m for buildings and 10m for woodland based on OS Map Local Data (February 2018). The ZTV does not account for the localised screening effects of vegetation (i.e. hedgerows, individual trees, small tree groups or shrub) beyond or immediately adjacent to the site.

The ZTV does not show potential visual effects or show likely overall effects. It shows potential theoretical visibility only. The ZTV has been produced for the purpose of informing the selection of assessment viewpoints, and the assessment of effects in conjunction with fieldwork.

Where theoretical visibility is shown, it does not indicate the extent of the development visible. The ZTV has been generated up to 2km from the development site.

SECOND ISSUE				
PO2	AR	SP	LF	26/10/2023
FIRST ISSUE				
PO1	SP	MK	LF	25/07/2023
Rev	Description	Drawn	Checked	Approved
S3	Drawing Status:	Suitable for Review and Comment		
Project Name: NORTH HYKEHAM RELIEF ROAD				
Project Location Plan				
Project Client: Lincolnshire				
Project Contractor: Balfour Beatty				
Project Designer: RAMBOLL				
Drawing Title: Figure 8.6 - Zone of Theoretical Visibility (ZTV) Heavy Goods Vehicle				
Project No:	Scale (BA3):	Drawn:	Date:	
1620013942	1:35,000	SP	Oct 2023	
Drawing No:	NHRR-TEP-ELS-HYKE-MP-LS-30005			Rev: P02

Reproduced from Ordnance Survey digital map data © Crown copyright 2023. All rights reserved. Contains data from OS Zoomstack. Licence number 0100057890.

Spatial Reference: British National Grid, GCS OSGB 1936, Datum: OSGB 1936