

# Lincolnshire Pension Fund

Actuarial valuation as at 31 March 2019

Valuation report

27 March 2020



# Contents

## Valuation report

## Page

1	Introduction	1
2	Valuation approach	3
3	Valuation results	5
4	Sensitivity analysis	10
5	Final comments	13

## Appendices

Appendix 1 – Data
Appendix 2 – Assumptions
Appendix 3 – Rates and Adjustments certificate
Appendix 4 – Section 13 dashboard

# 1 Introduction

## Background to the actuarial valuation

We have been commissioned by Lincolnshire County Council (“the Administering Authority”) to carry out an actuarial valuation of the Lincolnshire Pension Fund (“the Fund”) as at 31 March 2019 as required under Regulation 62 of the Local Government Pension Scheme Regulations 2013 (“the Regulations”).

The actuarial valuation is a risk management exercise with the purpose of reviewing the current funding plans and setting contribution rates for the Fund’s participating employers for the period from 1 April 2020 to 31 March 2023. This report summarises the outcomes of the valuation and the underlying advice provided to the Administering Authority throughout the valuation process.

This summary report is the culmination of other communications in relation to the valuation, in particular:

- Our [2019 valuation toolkit](#) which sets out the methodology used when reviewing funding plans;
- Our paper to the Fund’s Pension Committee dated 27 June 2019 which discusses the valuation assumptions;
- Our Initial Results Report issued 11 October 2019 which outlines the whole Fund results and inter-valuation experience;
- The Funding Strategy Statement which details the approach taken to adequately fund the current and future benefits due to members.

---

<sup>1</sup> Technical Actuarial Standards (TASs) are issued by the Financial Reporting Council (FRC) and set standards for certain items of actuarial work.

## Reliances and Limitations

This report has been prepared for the sole use of Lincolnshire County Council in its role as Administering Authority of the Fund to provide an actuarial valuation of the Fund as required under the Regulations. It has not been prepared for any other third party or for any other purpose. We make no representation or warranties to any third party as to the accuracy or completeness of this report, no reliance should be placed on this report by any third party and we accept no responsibility or liability to any third party in respect of it.

Hymans Robertson LLP is the owner of all intellectual property rights in this report. All such rights are reserved.

The totality of our advice complies with the Regulations as they relate to actuarial valuations.

The following Technical Actuarial Standards<sup>1</sup> are applicable in relation to this report and have been complied with where material:

- TAS 100 – Principles for technical actuarial work;
- TAS 300 – Pensions.



### Use of this report by other parties

This report is addressed to the Administering Authority of the Fund only. We appreciate that other parties may also seek information about the 2019 valuation process and methodology. We would encourage such parties to refer to the following publicly available documents for further information:

- The Fund's Funding Strategy Statement;
- The Fund's Investment Strategy Statement;
- Published meeting papers and minutes for the quarterly meetings of the Fund's Pensions Committee.

Considering these papers alongside this valuation report will provide a more complete view of the Fund's funding strategy and decision-making process surrounding this. These documents are available on the Fund's website or on request.

## 2 Valuation approach

### Employer contribution rates

The purpose of the valuation is to review the current funding strategy and ensure the Fund has a contribution plan and investment strategy in place that will enable it to pay members' benefits as they fall due.

Valuations for open defined benefit multi-employer pension funds such as the Lincolnshire Pension Fund are complex. Firstly, the time horizons are very long; benefits earned in the LGPS today will be paid out over a period of the next 80 years or more, and new members will continue to join in the future. Secondly, as they depend on unknowns such as future inflation and life expectancy, the actual value of future benefit payments is uncertain. Finally, to keep contributions affordable, the Fund invests in return seeking assets which have higher levels of future volatility.

Given the above and that the future cannot be predicted with certainty, employer contribution rates can only ever be an estimate. However, the valuation approach adopted uses an understanding of the Fund, and the uncertainties and risks discussed above, to quantify the likelihood of the contribution plan and investment strategy for each employer being sufficient to fund future benefits.

This is achieved in practice by following the process outlined below.

Step 1: The Fund sets a funding target (or funding basis) for each employer which defines the estimated amount of assets to be held to meet the future benefit payments.

Step 2: The Fund sets the funding time horizon over which the funding target is to be achieved.

Step 3: The Fund sets contributions that give a sufficiently high likelihood of meeting the funding target over the set time horizon.

These three steps are central to the “risk-based” approach to funding which is described in Guide 5 of our [2019 valuation toolkit<sup>2</sup>](#).

The risk-based approach uses an Asset Liability Model (described in Guide 6 of the [2019 valuation toolkit](#)) to project each employer's future benefit payments, contributions and investment returns into the future under 5,000 possible economic scenarios. Future inflation (and therefore benefit payments) and investment returns for each asset class (and therefore asset values) are variables in the projections. Further details of these variables are provided in Appendix 2. The investment strategy underlying the projection of employer asset values is provided in Appendix 1.

By projecting the evolution of an employer's assets and benefit payments 5,000 times, a contribution rate can be set that results in a sufficient number of the future projections being successful i.e. meeting the funding target by the funding time horizon.

The risk-based approach to setting employer contributions allows the Fund and its employers to understand and quantify the level of risk inherent in funding plans, something that is not possible using a single set of assumptions alone.

<sup>2</sup> [https://www.hymans.co.uk/media/uploads/LGPS\\_2019\\_Valuation\\_Toolkit\\_Guides.pdf](https://www.hymans.co.uk/media/uploads/LGPS_2019_Valuation_Toolkit_Guides.pdf)

Further detail on the approach to calculating contributions for individual employers, including the parameters used in the three steps for each type of employer, is set out in the Funding Strategy Statement effective from 19 March 2020.

### Funding position as at 31 March 2019

The valuation also offers an opportunity to measure the Fund's funding position as at 31 March 2019. Whilst this measurement has limited insight into understanding the long term ability to be able to pay members' benefits, it is a useful summary statistic.

For the purposes of this valuation we have adopted a "mark to market" approach, meaning that the Fund's assets have been taken into account at their market value and the liabilities have been valued by reference to a single set of assumptions based on market indicators at the valuation date. These assumptions are detailed in Appendix 2. As we have taken a market-related approach to the valuation of both the assets and the liabilities, we believe that they have been valued on a consistent basis.

### Significant events

The figures in this report are based on our understanding of the benefit structure of the LGPS in England and Wales as at 31 March 2019. Details can be found at <http://www.lgpsregs.org/>.

### McCloud ruling

The LGPS benefit structure is currently under review following the Government's loss of the right to appeal the McCloud and other similar court cases. At the time of writing, the format and scope of any benefit changes in light of the McCloud ruling is still unknown. In line with the [advice issued by the Scheme Advisory Board in May 2019](#), the following allowance has been made at the valuation for the McCloud ruling:

- Employer contribution rates: additional prudence in funding plans via an increase in the likelihood of success (step 3) when setting contribution rates;
- Measurement of funding position at 31 March 2019: no allowance.

Further details of the approach taken are set out in Section 2.7 of the Funding Strategy Statement.

### Indexation and equalisation of Guaranteed Minimum Pensions (GMP)

As a result of the Government's introduction of a single-tier state pension (STP) there is currently uncertainty around who funds certain elements of increases on GMPs for members reaching State Pension Age after 6 April 2016.

As part of the introduction of STP, the Government confirmed that public service pension schemes, including the LGPS, will be responsible for funding all increases on GMP as an 'interim solution'. In their [January 2018 consultation response](#), HM Treasury confirmed that the 'interim solution' will continue to remain in place up to 5 April 2021. Thereafter the Government's preferred approach is to convert GMP to scheme pension.

For the 2019 valuation, given the Government's preference for conversion to scheme benefits, we have assumed that all increases on GMPs for members reaching State Pension Age after 6 April 2016 will be paid for by LGPS employers. This has served to increase the value placed on the liabilities.

The Government have also stated that their preferred long term indexation solution of converting GMP to scheme pension will also meet the requirements of equalisation.

### 3 Valuation results

#### Employer contribution rates

The key objective of the Fund is to set employer contributions that are likely to be sufficient to meet both the cost of new benefits accruing and to address any funding surplus or deficit relative to the funding target over the agreed time horizon. A secondary objective is to maintain relatively stable employer contribution rates.

In order to meet the above objectives, the methodology set out in Section 2 has been used to set employer contributions from 1 April 2020.

Employer contributions are made up of two elements:

- a) the estimated cost of future benefits being built up each year, after deducting members' own contributions and including an allowance for the Fund's administration expenses. This is referred to as the "*Primary rate*", and is expressed as a percentage of members' pensionable pay; plus
- b) an adjustment for the difference between the Primary rate above, and the total contribution the employer needs to pay, referred to as the "*Secondary rate*". In broad terms, the Secondary rate is in respect of benefits already accrued at the valuation date. The Secondary rate may be expressed as a percentage of pay and/or a monetary amount in each year.

The Primary rate and Secondary rate for every contributing employer in the Fund is set out in the Rates and Adjustments Certificate in Appendix 3.

Each employer has been certified Primary and Secondary contributions that are appropriate for that employer's circumstances and which reflects that employer's experience. However, broadly speaking:

- Primary contribution rates have been subject to some upwards pressure as a result of a weaker outlook for future investment returns and the additional prudence built into funding plans to allow for the McCloud ruling;
- Secondary contributions have also increased since 31 March 2016, reflecting the Fund's funding strategy plan.

The table below summarises the whole Fund Primary and Secondary Contribution rates at this valuation. The Primary rate is the payroll weighted average of the underlying individual employer Primary rates and the Secondary rate is the total of the underlying individual employer Secondary rates, calculated in accordance with the Regulations and CIPFA guidance. The whole Fund Primary and Secondary contributions calculated at the 2016 valuation of the Fund are shown for comparison.

	Last Valuation 31 March 2016		This Valuation 31 March 2019	
Primary Rate (% of pay)	17.4%		18.6%	
Secondary Rate (£)	2017/18	18,004,000	2020/21	22,875,000
	2018/19	20,539,000	2021/22	25,727,000
	2019/20	23,222,000	2022/23	28,687,000

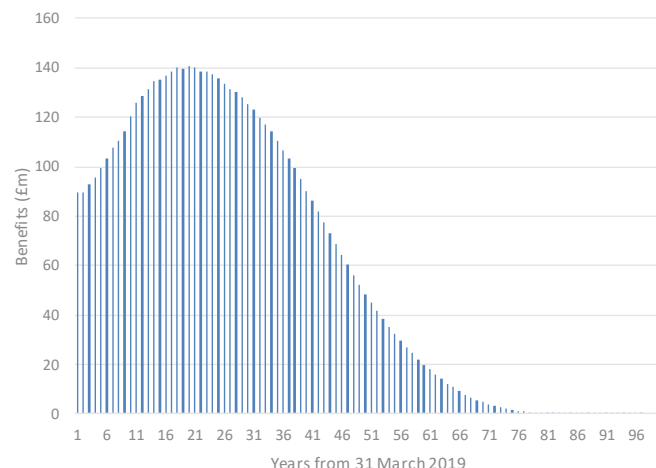
The Primary rate includes an allowance of 0.5% of pensionable pay for the Fund's expenses (0.5% at the 2016 valuation).

The average employee contribution rate is 6.1% of pensionable pay (6.1% at the 2016 valuation).

### Funding position as at 31 March 2019

The funding position is a summary statistic often quoted to give an indication of the health of the Fund. It is limited as it provides only a snapshot in time and is based on a single set of assumptions about the future. To measure the funding position at 31 March 2019, we compare the value of the Fund's assets on that date against the expected cost (including an allowance for future investment returns) of all the future benefit payments accrued up to the valuation date (the liabilities).

The chart below details the projected future benefit payments based on the membership data summarised in Appendix 1 and the demographic, salary and benefit increases assumptions summarised in Appendix 2.



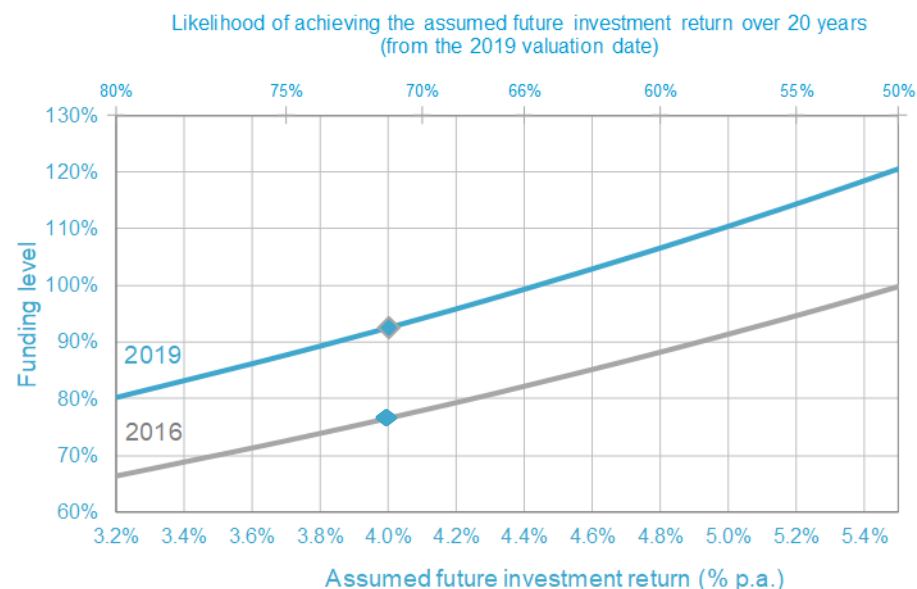
Using an assumption about the future investment return generated from the Fund's assets allows a value to be placed on these payments in today's money; the liabilities. The higher the assumed investment return, the lower the liability value and therefore the higher the funding level.

The value placed on the liabilities is extremely sensitive to the investment return assumption. Based on the Fund's current benchmark investment strategy (detailed in Appendix 1) and the same model used in the contribution rate calculations, it is estimated that:

- There is a 50% likelihood of the Fund's investments achieving at least an annual return of 5.5% p.a. over the next 20 years;
- There is a 71% likelihood of the Fund's investments achieving at least an annual return of 4.0% p.a. over the next 20 years; and
- There is an 80% likelihood of the Fund's investments achieving at least an annual return of 3.2% p.a. over the next 20 years.

The following chart shows how the funding level varies with the future investment return assumption (blue line). For comparison, the funding level associated with the same choice of investment return assumption at the 2016 valuation is also shown (grey line).





From this chart, we can see that:

- Regardless of the investment return assumption used, there has been a genuine improvement in the funding position at 31 March 2019 compared to the last valuation, reflecting an increase in the assets held today per pound of benefit to be paid out in future;
- The funding position would be 100% if future investment returns were around 4.4% p.a. (at 2016, the investment return would have needed to be 5.5% p.a.). The likelihood of the Fund's assets yielding at least this return is approximately 66%;
- If future investment returns were 5.5% p.a. then the Fund currently holds sufficient assets to meet 121% of the accrued liabilities. The likelihood of the Fund's assets yielding at least this return is 50%. 121% can therefore be considered the "best estimate" funding position.

### Reported funding position

The valuation outputs are more meaningful when stakeholders can understand the likelihood, and hence the level of prudence, attached to them. The above chart does this for the measurement of the funding position.

However, there is still a requirement to report a single funding position at 31 March 2019. This reported position must include a margin of prudence.

For the purpose of reporting a funding level and an associated funding surplus/deficit for the 2019 valuation, an investment return of 4.0% p.a. has been used. It is estimated that the Fund's assets have a 71% likelihood of achieving this return.

The resulting funding position is as follows:

Valuation Date	31 March 2016	31 March 2019
<b>Past Service Liabilities</b>	<b>(£m)</b>	<b>(£m)</b>
Employees	769	869
Deferred Pensioners	488	500
Pensioners	1,031	1,167
<b>Total Liabilities</b>	<b>2,288</b>	<b>2,536</b>
<b>Assets</b>	<b>1,759</b>	<b>2,353</b>
<b>Surplus / (Deficit)</b>	<b>(529)</b>	<b>(183)</b>
<b>Funding Level</b>	<b>77%</b>	<b>93%</b>

There has been an improvement in the reported funding level since 31 March 2016 from 77% to 93% and a reduction in the funding deficit from £529m to £183m.

A breakdown of the key factors that have influenced the reported funding position from 31 March 2016 to 31 March 2019 are detailed overleaf.

Change in the surplus/deficit position	Assets (£m)	Liabilities (£m)	Surplus / (Deficit) (£m)
<b>Last valuation at 31 March 2016</b>	<b>1,759</b>	<b>2,288</b>	<b>(529)</b>
<b>Cashflows</b>			
Employer contributions paid in	222		222
Employee contributions paid in	59		59
Benefits paid out	(261)	(261)	0
Net transfers into / out of the Fund*	5		5
Other cashflows (e.g. Fund expenses)	(5)		(5)
<b>Expected changes in membership</b>			
Interest on benefits already accrued		288	(288)
Accrual of new benefits		273	(273)
<b>Membership experience vs expectations</b>			
Salary increases less than expected		(6)	6
Benefit increases less than expected		(0)	0
Early retirement strain (and contributions)	4	5	(1)
Ill health retirement gain		(6)	6
Early leavers greater than expected		(1)	1
Pensions ceasing greater than expected		(5)	5
Commutation less than expected		3	(3)
Impact of GMP equalisation		3	(3)
Other membership experience		(25)	25
<b>Changes in market conditions</b>			
Investment returns on the Fund's assets	569		569
Changes in future inflation expectations		73	(73)
<b>Changes in actuarial assumptions</b>			
Change in demographic assumptions (excl. longevity)		(5)	5
Change in longevity assumptions		(85)	85
Change in salary increase assumption		(4)	4
Change in assumed rate of investment returns		0	(0)
<b>This valuation at 31 March 2019</b>	<b>2,353</b>	<b>2,536</b>	<b>(183)</b>

\* We have insufficient data to value the impact on the liabilities as a result of transfers in/out

Since the previous valuation, various events have taken place which affect the value placed on the liabilities, including:

- There is an interest cost of £288m. This is broadly three years of compound interest at 4.0% p.a. applied to the previous valuation liability value of £2,288m. The benefits that have been accrued to the valuation date are three years closer to payment at 31 March 2019 than they were at 31 March 2016, meaning there is less opportunity for future investment returns to help meet this cost. This serves to increase the value placed on the liabilities;
- The areas of membership experience that have had the greatest impact on the surplus/deficit position of the Fund are set out below, together with their impact on the liabilities:

	Expected	Actual	Difference	Impact on Liabilities
<b>Pre-retirement experience</b>				
Early leavers (no of lives)	6,103	7,298	1,195	Positive
Ill health retirements (no of lives)	176	121	(55)	Positive
Salary increases (p.a.)	3.2%	2.9%	(0.3%)	Positive
<b>Post-retirement experience</b>				
Benefit increases (p.a.)	2.1%	2.1%	(0.0%)	Broadly neutral
Pensions ceasing (£000)	5,534	6,122	588	Positive

- The changes to the longevity assumptions used for the valuation have resulted in a modest reduction in life expectancies. This has served to reduce the liabilities by £85m;
- The assumed rate of future CPI inflation has increased from 2.1% p.a. at 31 March 2016 to 2.3% p.a. at 31 March 2019. This has increased the value of the liabilities by £73m.

There has been a large increase in the value of the Fund's assets since the previous valuation because:

- The investment return on the Fund's assets for the period 31 March 2016 to 31 March 2019 was 36.2%. This has increased the value of the assets by £569m.

### Projection of the funding position

The progression of the funding position will depend on various factors including future asset performance, economic conditions and membership movements. If the financial and demographic assumptions made at this valuation are borne out in practice, and there are no changes to the valuation assumptions, we project that the funding level at the 2022 valuation date will be approximately 94%. This allows for contributions to be paid as described in Appendix 3.

## 4 Sensitivity analysis

The results set out in this report are based on assumptions about the future. The actual cost of providing the benefits will depend on the actual experience of the Fund, which could be significantly better or worse than assumed. This section discusses the sensitivity of the results to some of the key assumptions.

### Sensitivity of contribution rates to changes in assumptions

The approach to setting employer contribution rates mitigates the limitation of relying on one particular set of assumptions about the future by recognising the uncertainty around future investment returns and inflation. Therefore, there is no need to carry out additional analysis of the sensitivity of contribution rates to changes in financial assumptions.

The contribution rates are sensitive to changes in demographic assumptions. The results in this section in relation to the funding position can be broadly applied to the contribution rates.

### Sensitivity of the funding position to changes in assumptions

The reported valuation funding position is based on one set of actuarial assumptions about the future of the Fund. If all of the assumptions made were exactly borne out in practice then the liability value presented in this report would represent the actual cost of providing benefits from the Fund as it stands at 31 March 2019.

### Sensitivity of the funding position to future investment returns

The chart in Section 3 details how the funding position varies with the future assumed investment return.

### Sensitivity of the funding position to future inflation

Pensions (both in payment and in deferment) in the LGPS increase annually in line with CPI. Furthermore, benefits accrued in the CARE scheme are revalued annually in line with CPI. If future CPI inflation is higher than the assumed rate of 2.3% then the cost of the benefits will be higher than we have set out in Section 3.

The table quantifies the impact on the funding position of varying the benefit increases and CARE revaluation (CPI) assumption below.

CPI Assumption	Surplus/(Deficit)	Funding Level
% pa	(£m)	%
2.1%	(110)	96%
2.3%	(183)	93%
2.5%	(256)	90%

### Sensitivity of the funding position to life expectancy

The main area of demographic risk is people living longer than expected. If long term mortality rates fall at a rate of 1.5% p.a. (compared to the assumed 1.25% p.a.) then members will live slightly longer than we have assumed in this valuation. The impact on the funding position is detailed below.

Long term rate of improvement	Surplus/(Deficit)	Funding Level
% pa	(£m)	%
1.25%	(183)	93%
1.50%	(448)	84%



### Other demographic risks to consider

There are other risk factors which would have an impact on the funding position. Examples of these include the level of ill health retirements, withdrawals from the scheme and take up of the 50:50 option. These are probably unlikely to change in such a way that would rank them as amongst the highest risks facing the Fund and therefore there has been no further quantification of their risk.

### Comment on sensitivity analysis

Note that the tables above show the effect of changes to each assumption in isolation. In reality, it is perfectly possible for the experience of the Fund to deviate from more than one of the assumptions simultaneously and so the precise effect on the funding position is therefore more complex. Furthermore, the range of assumptions shown here is by no means exhaustive and should not be considered as the limits of how extreme experience could actually be.

### Other risks to consider

#### Regulatory, Administration and Governance risks

As well as financial and demographic risks, the Fund also faces:

- Regulatory risks – central government legislation could significantly change the cost of the scheme in the future; and
- Administration and governance risk – failures in administration processes could lead to incorrect data and inaccuracies in the actuarial calculations.

These risks are considered and monitored by the Fund as part of its ongoing risk management framework.

### Resource and environment risks

The Fund is exposed to risks relating to future resource constraints and environmental changes. These risks may prove to be material.

Climate change is a complex issue for the Fund. Adverse future climate change outcomes will have an impact on future longevity, inflation, government and corporate bond yields and equity returns.

Whilst there has been no explicit increase in certified employer contribution related to climate change, these risks may be considered by the Administering Authority when assessing the output from contribution rate ('comPASS') modelling.

### Risk management

Employers participating in the Fund are exposed to a number of risks. These include, but are not limited to:

- Investment risk;
- Market risks;
- Demographic risks;
- Regulatory risks;
- Administration and Governance risks;
- Resource and Environmental risks.

The Funding Strategy Statement has further details about these risks and what actions the Fund takes to monitor, mitigate and manage each one.

### Post valuation events

There has recently been significant volatility in the financial markets as a result of the economic uncertainty associated with the COVID-19 pandemic. At a recent date, we estimate that the whole Fund investment return since 31 March 2019, would be in the region of -5% to -10%. As an open scheme, with a strong covenant, the LGPS as a whole is able to take a long-term outlook when considering the general funding implications of such external events. For employers who have a very short time horizon, recent market falls may be more immediately impactful, and the administering authority is taking steps to engage individually with these employers about the deteriorated funding position.

At the time of writing, it is very uncertain how this will affect the long-term economy and investment returns. Therefore, no allowance has been made for this ongoing volatility in the 2019 valuation results or contribution rates detailed in the Rates & Adjustments Certificate. This situation will be monitored closely to understand what impact it may have on the Fund and participating employers.

## 5 Final comments

The Fund's valuation operates within a broader framework, and this document should therefore be considered alongside the following:

- the Funding Strategy Statement, which in particular highlights how different types of employer in different circumstances have their contributions calculated;
- the Investment Strategy Statement, which sets out the investment strategy for the Fund;
- the general governance of the Fund, such as meetings of the Pensions Committee and Local Pension Board, decisions delegated to officers, the Fund's business plan, etc;
- the Fund's risk register; and
- the information the Fund holds about the participating employers.

### Intervaluation employer events

#### New employers joining the Fund

Any new employers or admission bodies joining the Fund should be referred to the Fund Actuary to assess the required level of contribution. Depending on the number of transferring members the ceding employer's rate may also need to be reviewed.

#### Cessations and bulk transfers

Any employer who ceases to participate in the Fund should be referred to us in accordance with Regulation 64 of the Regulations.

Any bulk movement of scheme members:

- involving 10 or more scheme members being transferred from or to another LGPS fund; or
- involving 2 or more scheme members being transferred from or to a non-LGPS pension arrangement;

should be referred to us to consider the impact on the Fund.

### Valuation frequency

Under the provisions of the LGPS regulations, the next formal valuation of the Fund is due to be carried out as at 31 March 2022 where contribution rates payable from 1 April 2023 will be set.



Peter Summers

Fellow of the Institute and Faculty of Actuaries

For and on behalf of Hymans Robertson LLP

27 March 2020

# Appendices

---



## Appendix 1 – Data

### Membership data as at 31 March 2019

A summary of the membership data provided by the Administering Authority for the purposes of the valuation at 31 March 2019 is shown below. The corresponding membership data from the previous valuation is also shown for reference.

Whole Fund Membership Data	Last Valuation 31 March 2016	This Valuation 31 March 2019
Employee members		
Number	22,304	22,755
Total Actual Pay (£000)	295,783	335,509
Total Accrued Pension (£000) (CARE)	11,560	26,643
Average Age (liability weighted)	50.9	51.3
Future Working Lifetime (years)	9.5	8.5
Deferred pensioners		
Number	33,587	32,184
Total Accrued Pension (£000)	28,263	29,729
Average Age (liability weighted)	50.6	50.9
Pensioners		
Number	18,241	21,576
Total pensions in payment (£000)	65,120	75,310
Average Age (liability weighted)	68.0	68.5
Average duration of liabilities	16.7	17.7

### Benchmark investment strategy

The following investment strategy, extracted from the Fund's Investment Strategy Statement, has been used to assess employer contribution rates and to set the future investment return assumption as at 31 March 2019:

% allocation	Current strategy
UK equities	15%
Overseas equities	40%
Diversified Growth	15%
Infrastructure (equity)	2%
Total growth assets	72%
Index-linked gilts	2%
Fixed interest gilts	5%
UK Corporate Bonds	7%
Total protection assets	14%
Multi asset credit	5%
Property	9%
Total income generating assets	14%
Grand total	100%

### Other data used in this valuation

We have also relied upon asset and accounting data from the Fund's published 2016/17, 2017/18 and 2018/19 Annual Report and Accounts. Employer level cashflow data was provided by the Administering Authority and reconciled against the information shown in these documents.

### Comment on data quality

The results of the valuation are dependent on the quality of the data provided to us by the Administering Authority for the specific purpose of this valuation. We have carried out validations on the membership data provided to ensure it is fit for the purpose of the valuation. Further details can be found in our report issued to the Administering Authority entitled "Data report for 2019 valuation". We believe the membership data is fit for the purposes of this valuation.

## Appendix 2 – Assumptions

### Financial assumptions used to set employer contribution rates

#### Projection of assets and benefit payments

The approach to setting employer contribution rates does not rely on a single set of assumptions but involves the projection of an employer's future benefit payments, contributions and investment returns under 5,000 future economic scenarios. In this modelling, inflation (and therefore benefit payments) and investment returns for each asset class (and employer asset values) are variables and take different values in each projection.

The model underlying these projections is Hymans Robertson's proprietary economic model, the Economic Scenario Service (ESS). The ESS is a complex model to reflect the interactions and correlations between different asset classes and wider economic variables. The table below shows the calibration of the model as at 31 March 2019. All returns are shown net of fees and are the annualised total returns over 5, 10 and 20 years, except for the yields which refer to simulated yields at that time horizon.

Annualised total returns											
		Cash	Index Linked Gilts (medium)	Fixed Interest Gilts (medium)	UK Equity	Overseas Equity	Property	Corp Medium A	Inflation	17 year real yield	17 year yield
5 years	16th %ile	-0.4%	-2.3%	-2.9%	-4.1%	-4.1%	-3.5%	-2.7%	1.9%	-2.5%	0.8%
	50th %ile	0.7%	0.5%	0.3%	4.0%	4.1%	2.4%	0.8%	3.3%	-1.7%	2.1%
	84th %ile	2.0%	3.3%	3.4%	12.7%	12.5%	8.8%	4.0%	4.9%	-0.8%	3.6%
10 years	16th %ile	-0.2%	-1.8%	-1.3%	-1.5%	-1.4%	-1.5%	-0.9%	1.9%	-2.0%	1.2%
	50th %ile	1.3%	0.0%	0.2%	4.6%	4.7%	3.1%	0.8%	3.3%	-0.8%	2.8%
	84th %ile	2.9%	1.9%	1.7%	10.9%	10.8%	7.8%	2.5%	4.9%	0.4%	4.8%
20 years	16th %ile	0.7%	-1.1%	0.1%	1.2%	1.3%	0.6%	0.7%	2.0%	-0.7%	2.2%
	50th %ile	2.4%	0.3%	1.0%	5.7%	5.8%	4.3%	1.9%	3.2%	0.8%	4.0%
	84th %ile	4.5%	2.0%	2.0%	10.3%	10.4%	8.1%	3.0%	4.7%	2.2%	6.3%
Volatility (Disp) (1 yr)		1%	7%	10%	17%	17%	14%	11%	1%		

#### Funding target

At the end of an employer's funding time horizon, an assessment is made – for each of the 5,000 projections – of how the assets held compare to the value of assets required to meet the future benefit payments (the funding target). To value the cost of future benefits assumptions are made about the following financial factors:

- Benefit increases and CARE revaluation;
- Salary growth;
- Investment returns (the “discount rate”).

Each of the 5,000 projections represents a different prevailing economic environment at the end of the funding time horizon and so a single, fixed value for each assumption is not appropriate for every projection. Therefore, instead of using a fixed value, each assumption is set with reference to an economic indicator. The economic indicators used are:

Assumption	Economic Indicator
<b>Benefit increases</b>	Future CPI inflation expectations
<b>CARE revaluation</b>	Future CPI inflation expectations
<b>Salary increases</b>	As above plus 0.3% p.a.
<b>Future investment returns</b>	Prevailing risk free rate of return plus margin

The Fund has three funding bases which will apply to different employers depending on their type. Each funding basis uses a different margin in the future investment return assumption.

Funding Basis	Margin above risk-free rate
<b>Ongoing participation</b>	2.0%
<b>Contractor exit</b>	Same as used to allocate assets on joining the Fund
<b>Gilts exit</b>	0%

## Financial assumptions used to assess the funding position

### Salary and Benefit Increases

Financial Assumptions (p.a.)	31 March 2016	31 March 2019
Benefit increases and CARE revaluation (CPI)	2.1%	2.3%
Salary increases	2.6%*	2.6%**

\*RPI less 0.6%

\*\*CPI plus 0.3%

### Investment Return

The reported funding position is based on an assumed future investment return of 4.0% p.a. The derivation of this assumption is set out in Section 3. The equivalent assumption at the 2016 valuation was 4.0% p.a. This was derived in a different way, please see the 2016 valuation report for further details.

### Demographic assumptions

The same demographic assumptions are used in setting contribution rates and assessing the current funding position.

### Longevity

As the Fund is a member of Club Vita, the baseline longevity assumptions are a bespoke set of Vita Curves that are tailored to fit the membership profile of the Fund. These curves are based on the data the Fund has provided us with for the purposes of this valuation.

We have also allowed for future improvements in mortality based on the CMI 2018 model with an allowance for smoothing of recent mortality experience and a long-term rate of improvement of 1.25% p.a. for both women and men.

Longevity Assumptions	31 March 2016	31 March 2019
Baseline Longevity	Club Vita	Club Vita
Future Improvements	CMI2013, Peaked, 1.25% p.a. long term	CMI2018, Smoothed, 1.25% p.a. long term

Full details are available on request.

The longevity assumptions result in the following typical future life expectancies from age 65 (figures for 2016 shown for comparison):

Assumed Life Expectancy	31 March 2016	31 March 2019
<b>Male</b>		
Pensioners	22.1 years	21.4 years
Non-pensioners	24.1 years	22.4 years
<b>Female</b>		
Pensioners	24.4 years	23.7 years
Non-pensioners	26.6 years	25.2 years

Non-pensioners are assumed to be aged 45 at the valuation date

### Other demographic assumptions

We are in the unique position of having a very large local authority data set from which to derive our other demographic assumptions. We have analysed the trends and patterns that are present in the membership of local authority funds and tailored our demographic assumptions to reflect LGPS experience. The resulting demographic assumptions are as follows:

Demographic Assumptions	
<b>Retirements in normal health</b>	We have adopted the retirement age pattern assumption as used for the purpose of the 2016 LGPS cost cap valuation. Further details are available on request.
<b>Death in Service</b>	See sample rates below
<b>Retirements in ill health</b>	See sample rates below
<b>Withdrawals</b>	See sample rates below
<b>Promotional salary increases</b>	See sample increases below
<b>Family details</b>	A varying proportion of members are assumed to have a dependant at retirement or on earlier death. For example, at age 60 this is assumed to be 90% for males and 85% for females. The dependant of a male member is assumed to be 3 years younger than him and the dependant of a female member is assumed to be 3 years older than her.
<b>Commutation</b>	50% of future retirements elect to exchange pension for additional tax free cash up to HMRC limits for service to 1 April 2008 (equivalent 75% service from 1 April 2008).
<b>50:50 option</b>	1.0% of members (uniformly distributed across the age, service and salary range) will choose the 50:50 option.

### Sample rates for demographic assumptions

#### Males

Age	Salary Scale	Incidence per 1000 active members per annum						
		Death Before Retirement FT & PT	Withdrawals		Ill Health Tier 1		Ill Health Tier 2	
			FT	PT	FT	PT	FT	PT
20	105	0.21	252.69	439.47	0.00	0.00	0.00	0.00
25	117	0.21	166.91	290.28	0.00	0.00	0.00	0.00
30	131	0.26	118.43	205.93	0.00	0.00	0.00	0.00
35	144	0.30	92.53	160.88	0.10	0.07	0.02	0.01
40	150	0.51	74.50	129.48	0.16	0.12	0.03	0.02
45	157	0.85	69.98	121.60	0.35	0.27	0.07	0.05
50	162	1.36	57.68	100.12	0.90	0.68	0.23	0.17
55	162	2.13	45.42	78.88	3.54	2.65	0.51	0.38
60	162	3.83	40.49	70.28	6.23	4.67	0.44	0.33
65	162	6.38	0.00	0.00	11.83	8.87	0.00	0.00

#### Females

Age	Salary Scale	Incidence per 1000 active members per annum						
		Death Before Retirement FT & PT	Withdrawals		Ill Health Tier 1		Ill Health Tier 2	
			FT	PT	FT	PT	FT	PT
20	105	0.12	227.37	252.63	0.00	0.00	0.00	0.00
25	117	0.12	152.99	169.97	0.10	0.07	0.02	0.01
30	131	0.18	128.25	142.46	0.13	0.10	0.03	0.02
35	144	0.30	110.69	122.91	0.26	0.19	0.05	0.04
40	150	0.48	92.12	102.26	0.39	0.29	0.08	0.06
45	157	0.77	85.97	95.41	0.52	0.39	0.10	0.08
50	162	1.13	72.48	80.35	0.97	0.73	0.24	0.18
55	162	1.49	54.08	60.02	3.59	2.69	0.52	0.39
60	162	1.90	43.58	48.31	5.71	4.28	0.54	0.40
65	162	2.44	0.00	0.00	10.26	7.69	0.00	0.00





### Prudence in assumptions

We are required to include a degree of prudence within the valuation. This has been achieved in both the setting of contributions and assessment of funding position.

### Contribution rates

- Employer funding plans have been set such that the likelihood the employer's funding target is met by the end of the funding time horizon is more than 50%. The actual likelihood varies by employer. Further detail in is the Funding Strategy Statement.

### Funding position

- The Fund's investments have a 71% likelihood of returning at least the assumed return.

All other assumptions represent our "best estimate" of future experience.

The assumptions used in this valuation have been agreed with the Administering Authority and are set out in the Fund's Funding Strategy Statement effective from 19 March 2020.

## Appendix 3 – Rates and Adjustments certificate

In accordance with regulation 62(4) of the Regulations we have made an assessment of the contributions that should be paid into the Fund by participating employers for the period 1 April 2020 to 31 March 2023 in order to maintain the solvency of the Fund.

The method and assumptions used to calculate the contributions set out in the Rates and Adjustments certificate are detailed in the Funding Strategy Statement effective from 19 March 2020 and in Appendix 2 of our report on the actuarial valuation dated 27 March 2020. These assumptions underpin our estimate of the number of members who will become entitled to a payment of pensions under the provisions of the LGPS and the amount of liabilities arising in respect of such members.

The table below summarises the whole fund Primary and Secondary Contribution rates for the period 1 April 2020 to 31 March 2023. The Primary rate is the payroll weighted average of the underlying individual employer Primary rates and the Secondary rate is the total of the underlying individual employer secondary rates, calculated in accordance with the Regulations and CIPFA guidance.

Whole Fund Contribution Rate		
Primary Rate (% of pay)	18.6%	
Secondary Rate (£)	2020/21	22,875,000
	2021/22	25,727,000
	2022/23	28,687,000

The required minimum contribution rates for each employer in the Fund are set out below.

Employer / Pool code	Agresso code	Employer/Pool name	Contributions in payment (2019/2020)			Primary rate % 1 April 2020 2023	Secondary Rate						Total Contribution Rate								
			Primary %	Secondary rate			2020/2021		2021/2022		2022/2023		2020/2021		2021/2022		2022/2023				
				(%)	(£000)		Secondary rate (%)	Secondary rate (£000)	Secondary rate (%)	Secondary rate (£000)	Secondary rate (%)	Secondary rate (£000)	% of pay	(£000)	% of pay	(£000)	% of pay	(£000)			
Scheduled Bodies																					
Pool		Lincolnshire County Council	16.4%	0.0%	£6,510	17.5%		£8,240		£9,540		£10,890	17.5%	plus	£8,240	17.5%	plus	£9,540	17.5%	plus	£10,890
		- Lincolnshire Schools	16.4%	7.5%	£0	17.5%	7.4%		8.4%		9.4%		24.9%	plus	£0	25.9%	plus	£0	26.9%	plus	£0
		- SERCO	16.4%	7.5%	£0	17.5%	7.4%		8.4%		9.4%		24.9%	plus	£0	25.9%	plus	£0	26.9%	plus	£0
		- GLL	16.4%	7.5%	£0	17.5%	7.4%		8.4%		9.4%		24.9%	plus	£0	25.9%	plus	£0	26.9%	plus	£0
902	P30002	West Lindsey District Council	16.2%	0.0%	£863	17.2%		£940		£1,028		£1,119	17.2%	plus	£940	17.2%	plus	£1,028	17.2%	plus	£1,119
903	P30003	East Lindsey District Council	16.6%	0.0%	£789	17.5%		£872		£968		£1,067	17.5%	plus	£872	17.5%	plus	£968	17.5%	plus	£1,067
904	P30004	City of Lincoln Council	16.0%	0.0%	£1,743	17.3%		£1,777		£1,959		£2,147	17.3%	plus	£1,777	17.3%	plus	£1,959	17.3%	plus	£2,147
905	P30006	Boston Borough Council	16.6%	0.0%	£570	17.7%		£598		£670		£745	17.7%	plus	£598	17.7%	plus	£670	17.7%	plus	£745
906	P30005	North Kesteven District Council	16.3%	0.0%	£779	17.6%		£795		£901		£1,010	17.6%	plus	£795	17.6%	plus	£901	17.6%	plus	£1,010
907	P30007	South Kesteven District Council	16.5%	0.0%	£1,128	17.5%		£1,226		£1,393		£1,566	17.5%	plus	£1,226	17.5%	plus	£1,393	17.5%	plus	£1,566
908	P30008	South Holland District Council	16.7%	0.0%	£638	17.4%		£744		£818		£894	17.4%	plus	£744	17.4%	plus	£818	17.4%	plus	£894
Pool		Police and Crime Commissioner for Lincolnshire & G4S	16.3%	0.0%	£1,265	17.5%	-1.2%	£1,448	-1.2%	£1,657	-1.2%	£1,874	16.3%	plus	£1,448	16.3%	plus	£1,657	16.3%	plus	£1,874
Further Education Bodies																					
910	P30009	Bishop Grosseteste University	20.9%	0.0%	£84	23.5%		£76		£76		£76	23.5%	plus	£76	23.5%	plus	£76	23.5%	plus	£76
974	P30026	New College Stamford	20.6%	0.0%	£65	23.8%		£26		£27		£28	23.8%	plus	£26	23.8%	plus	£27	23.8%	plus	£28
975	P30027	Grantham College	21.0%	0.0%	£88	23.8%		£42		£43		£44	23.8%	plus	£42	23.8%	plus	£43	23.8%	plus	£44
977	P30029	Boston College	21.5%	0.0%	£78	23.8%	0.0%	£0	0.0%	£0	0.0%	£0	23.8%	plus	£0	23.8%	plus	£0	23.8%	plus	£0
978	P30030	Lincoln College	22.3%	0.0%	£457	24.5%		£264		£271		£278	24.5%	plus	£264	24.5%	plus	£271	24.5%	plus	£278
Community Admission Bodies																					
815	P20006	Waterloo Housing Group	26.0%	0.0%	£659	28.2%		£392		£392		£392	28.2%	plus	£392	28.2%	plus	£392	28.2%	plus	£392
818	P20008	Lincolnshire Housing Partnership	26.2%	0.0%	£115	29.7%		£143		£143		£143	29.7%	plus	£143	29.7%	plus	£143	29.7%	plus	£143
832	P20014	Active Lincolnshire	21.9%	0.0%	£3	21.6%	0.0%	£0	0.0%	£0	0.0%	£0	21.6%	plus	£0	21.6%	plus	£0	21.6%	plus	£0
833	P20000	Adults Supporting Adults	29.1%	0.0%	£0	31.1%	-2.0%	£0	-2.0%	£0	-2.0%	£0	29.1%	plus	£0	29.1%	plus	£0	29.1%	plus	£0
862	P20022	Lincoln Arts Trust	25.6%	0.0%	£0	28.3%	-2.7%	£0	-2.7%	£0	-2.7%	£0	25.6%	plus	£0	25.6%	plus	£0	25.6%	plus	£0
Drainage Boards																					
911	P30010	Witham Third Internal Drainage Board	17.3%	6.7%	£39	18.9%		£26		£26		£27	18.9%	plus	£26	18.9%	plus	£26	18.9%	plus	£27
Pool		Lindsey Marsh Internal Drainage Board	17.5%	0.0%	£26	18.5%		£28		£29		£30	18.5%	plus	£28	18.5%	plus	£29	18.5%	plus	£30
921	P30045	Black Sluice Internal Drainage Board	16.8%	0.0%	£98	18.2%		£62		£64		£66	18.2%	plus	£62	18.2%	plus	£64	18.2%	plus	£66
922	P30046	Witham Fourth Internal Drainage Board	18.0%	0.0%	£92	19.4%		£76		£77		£80	19.4%	plus	£76	19.4%	plus	£77	19.4%	plus	£80
923	P30047	Welland and Deeping Internal Drainage Board	17.7%	0.0%	£125	19.2%		£112		£115		£118	19.2%	plus	£112	19.2%	plus	£115	19.2%	plus	£118
924	P30048	South Holland Internal Drainage Board	18.3%	10.4%	£100	19.3%	9.4%	£150	9.4%	£150	9.4%	£150	28.7%	plus	£150	28.7%	plus	£150	28.7%	plus	£150
926	P30050	Witham First Internal Drainage Board	19.3%	7.5%	£5	20.5%	-1.2%	£0	-1.2%	£0	-1.2%	£0	19.3%	plus	£0	19.3%	plus	£0	19.3%	plus	£0
927	P30051	Upper Witham Internal Drainage Board	18.4%	0.0%	£58	19.7%		£51		£53		£54	19.7%	plus	£51	19.7%	plus	£53	19.7%	plus	£54
932	P30054	North East Lindsey Internal Drainage Board	17.9%	0.0%	£17	20.7%		£1		£1		£1	20.7%	plus	£1	20.7%	plus	£1	20.7%	plus	£1

Employer / Pool code	Agresso code	Employer/Pool name	Contributions in payment (2019/2020)			Primary rate % 1 April 2020 2023	Secondary Rate						Total Contribution Rate					
			Primary %	Secondary rate			2020/2021		2021/2022		2022/2023		2020/2021		2021/2022		2022/2023	
				(%)	(£000)		Secondary rate	Secondary rate	Secondary rate	Secondary rate	Secondary rate	% of pay	(£000)	% of pay	(£000)	% of pay	(£000)	
Academies																		
500	P40073	Welton St Marys Church of England Primary Academy	18.8%	0.0%	£1	21.3%		£5		£6		£6	21.3%	plus £5	21.3%	plus £6	21.3%	plus £6
501	P40074	Boston High School	18.6%	0.0%	£21	21.2%		£28		£29		£30	21.2%	plus £28	21.2%	plus £29	21.2%	plus £30
502	P40076	Spalding Academy	19.4%	0.0%	£59	21.7%		£63		£65		£66	21.7%	plus £63	21.7%	plus £65	21.7%	plus £66
503	P40075	Bracebridge Infant and Nursery School	18.4%	0.0%	£0	20.7%		£2		£2		£2	20.7%	plus £2	20.7%	plus £2	20.7%	plus £2
505	P40080	Boston Grammar School	18.4%	0.0%	£7	20.1%		£7		£7		£8	20.1%	plus £7	20.1%	plus £7	20.1%	plus £8
508	P40086	Manor Leas Junior	18.9%	0.0%	£6	21.3%		£6		£7		£7	21.3%	plus £6	21.3%	plus £7	21.3%	plus £7
509	P40082	Gipsey Bridge Academy	19.9%	0.0%	£4	20.9%		£4		£4		£4	20.9%	plus £4	20.9%	plus £4	20.9%	plus £4
510	P40081	Spalding Grammar School	19.6%	0.0%	£27	21.1%		£27		£28		£29	21.1%	plus £27	21.1%	plus £28	21.1%	plus £29
515	P40089	St Peter and St Paul Catholic Voluntary Academy	19.1%	0.0%	£16	20.8%		£13		£13		£13	20.8%	plus £13	20.8%	plus £13	20.8%	plus £13
516	P40090	Lincoln Our Lady of Lincoln Catholic Primary School	18.8%	0.0%	£2	20.6%	0.0%	£0	0.0%	£0	0.0%	£0	20.6%	plus £0	20.6%	plus £0	20.6%	plus £0
517	P40091	Sleaford Our Lady of Good Counsel	17.9%	0.0%	£0	19.9%	-2.0%	£0	-2.0%	£0	-2.0%	£0	17.9%	plus £0	17.9%	plus £0	17.9%	plus £0
518	P40092	Lincoln St Hugh's Catholic Primary School	19.0%	0.0%	£8	21.5%		£7		£7		£7	21.5%	plus £7	21.5%	plus £7	21.5%	plus £7
519	P40093	Stamford St Augustines	18.8%	0.0%	£3	20.1%		£2		£2		£2	20.1%	plus £2	20.1%	plus £2	20.1%	plus £2
521	P40094	Utterby Primary School	19.5%	0.0%	£1	21.7%		£2		£2		£2	21.7%	plus £2	21.7%	plus £2	21.7%	plus £2
522	P40095	North Thoresby Primary School	18.6%	0.0%	£0	20.6%	0.0%	£0	0.0%	£0	0.0%	£0	20.6%	plus £0	20.6%	plus £0	20.6%	plus £0
524	P50000	Acorn Free School	16.5%	0.0%	£0	19.5%	-3.0%	£0	-3.0%	£0	-3.0%	£0	16.5%	plus £0	16.5%	plus £0	16.5%	plus £0
526	P40097	Carlton Academy	17.6%	0.0%	£0	19.8%		£4		£4		£4	19.8%	plus £4	19.8%	plus £4	19.8%	plus £4
527	P40096	Kirkby La Thorpe	19.4%	0.0%	£2	20.0%		£2		£2		£2	20.0%	plus £2	20.0%	plus £2	20.0%	plus £2
532	P40099	Wainfleet Magdalene C of E Academy	18.5%	0.0%	£16	20.6%		£14		£14		£14	20.6%	plus £14	20.6%	plus £14	20.6%	plus £14
535	P40100	Beacon Primary Academy	15.9%	0.0%	£0	19.1%	0.0%	£0	0.0%	£0	0.0%	£0	19.1%	plus £0	19.1%	plus £0	19.1%	plus £0
536	P40101	Weston St Marys Primary School	16.3%	0.0%	£1	20.2%		£1		£1		£1	20.2%	plus £1	20.2%	plus £1	20.2%	plus £1
539	P40104	Holbeach Primary Academy	17.2%	0.0%	£10	20.4%		£12		£12		£12	20.4%	plus £12	20.4%	plus £12	20.4%	plus £12
542	P40107	Lincoln UTC	17.6%	0.0%	£0	18.7%		£7		£7		£7	18.7%	plus £7	18.7%	plus £7	18.7%	plus £7
543	P40108	Lincoln St Giles Academy	18.2%	0.0%	£29	19.5%		£29		£30		£30	19.5%	plus £29	19.5%	plus £30	19.5%	plus £30
701	P40039	Witham St Hughs Academy	17.6%	0.0%	£4	20.3%		£2		£2		£2	20.3%	plus £2	20.3%	plus £2	20.3%	plus £2
702	P40041	Gainsborough Benjamin Adlard Community School	18.6%	0.0%	£0	20.4%	-1.8%	£0	-1.8%	£0	-1.8%	£0	18.6%	plus £0	18.6%	plus £0	18.6%	plus £0
703	P40040	Washington Academy	19.3%	0.0%	£0	21.0%		£6		£6		£6	21.0%	plus £6	21.0%	plus £6	21.0%	plus £6
704	P40038	Ruskington Chestnut Street C of E Primary School	19.5%	0.0%	£22	20.6%		£23		£23		£24	20.6%	plus £23	20.6%	plus £23	20.6%	plus £24
705	P40042	Long Bennington Church of England Academy	19.7%	0.0%	£6	21.6%		£9		£10		£10	21.6%	plus £9	21.6%	plus £10	21.6%	plus £10
706	P40049	Boston West Academy	19.2%	0.0%	£0	21.0%	-1.8%	£0	-1.8%	£0	-1.8%	£0	19.2%	plus £0	19.2%	plus £0	19.2%	plus £0
707	P40043	Lincoln Manor Leas Infants School	19.3%	0.0%	£2	21.0%	0.0%	£0	0.0%	£0	0.0%	£0	21.0%	plus £0	21.0%	plus £0	21.0%	plus £0
708	P40045	Gainsborough Hillcrest Early Years Academy	16.9%	0.2%	£8	19.4%		£12		£12		£12	19.4%	plus £12	19.4%	plus £12	19.4%	plus £12
709	P40044	Rauceby Church of England Primary School	19.6%	0.0%	£6	22.2%		£6		£6		£6	22.2%	plus £6	22.2%	plus £6	22.2%	plus £6
710	P40046	Grantham National Church of England Junior School	19.2%	0.0%	£14	20.6%		£17		£17		£18	20.6%	plus £17	20.6%	plus £17	20.6%	plus £18
711	P40050	Harrowby Church of England Infant School	18.6%	0.0%	£5	20.6%		£2		£2		£2	20.6%	plus £2	20.6%	plus £2	20.6%	plus £2
712	P40051	Branston Junior Academy	19.2%	0.0%	£12	21.9%		£14		£14		£14	21.9%	plus £14	21.9%	plus £14	21.9%	plus £14
713	P40052	Woodhall Spa St Andrews Church of England	17.8%	0.5%	£5	20.4%		£1		£1		£1	20.4%	plus £1	20.4%	plus £1	20.4%	plus £1
714	P40079	Stamford St Gilberts Church of England Primary	18.6%	0.0%	£8	21.0%		£10		£10		£11	21.0%	plus £10	21.0%	plus £10	21.0%	plus £11



Employer / Pool code	Agresso code	Employer/Pool name	Contributions in payment (2019/2020)			Primary rate % 1 April 2020	Secondary Rate						Total Contribution Rate					
			Primary %	Secondary rate			2020/2021		2021/2022		2022/2023		2020/2021		2021/2022		2022/2023	
				(%)	(£000)	(£000)	(%)	(£000)	(%)	(£000)	(%)	(£000)	(%)	(£000)	% of pay	(£000)	% of pay	(£000)
Academies (cont.)																		
717	P40055	Kesteven and Grantham Academy	19.1%	0.0%	£37	21.4%		£33		£34		£35	21.4%	plus £33	21.4%	plus £34	21.4%	plus £35
718	P40056	Donington Thomas Cowley High School	19.0%	0.0%	£28	20.8%		£18		£18		£19	20.8%	plus £18	20.8%	plus £18	20.8%	plus £19
719	P40057	Gainsborough Parish Church Academy	18.5%	0.0%	£13	20.3%		£12		£12		£12	20.3%	plus £12	20.3%	plus £12	20.3%	plus £12
720	P40058	Louth Kidgate Academy	17.4%	0.0%	£10	19.6%		£11		£12		£12	19.6%	plus £11	19.6%	plus £12	19.6%	plus £12
721	P40059	Scothern Ellison Boulsters Church of England Academy	20.0%	0.0%	£4	20.3%		£1		£1		£2	20.3%	plus £1	20.3%	plus £1	20.3%	plus £2
722	P40060	William Lovell Church of England Academy	19.9%	0.0%	£29	21.0%		£28		£28		£29	21.0%	plus £28	21.0%	plus £28	21.0%	plus £29
724	P40062	The Skegness Junior Academy	18.7%	0.0%	£7	20.9%		£6		£6		£7	20.9%	plus £6	20.9%	plus £6	20.9%	plus £7
725	P40063	The Ingoldmells Academy	18.7%	0.0%	£5	20.1%		£1		£2		£2	20.1%	plus £1	20.1%	plus £2	20.1%	plus £2
726	P40064	Nettleham Infants School	19.1%	0.0%	£7	19.9%		£11		£12		£12	19.9%	plus £11	19.9%	plus £12	19.9%	plus £12
730	P40068	Mablethorpe Primary Academy	19.2%	0.0%	£13	20.8%		£13		£14		£14	20.8%	plus £13	20.8%	plus £14	20.8%	plus £14
731	P40069	The Skegness Infant Academy	18.1%	0.0%	£11	20.4%		£11		£11		£12	20.4%	plus £11	20.4%	plus £11	20.4%	plus £12
733	P40071	Welbourn Sir William Robertson Academy	18.7%	0.0%	£25	21.0%		£20		£20		£21	21.0%	plus £20	21.0%	plus £20	21.0%	plus £21
734	P40070	Little Gonerby Church of England Infants School	19.6%	0.0%	£5	21.2%		£2		£2		£3	21.2%	plus £2	21.2%	plus £2	21.2%	plus £3
735	P40072	Huttoft Primary School	18.7%	0.0%	£0	19.7%	0.0%	£0	0.0%	£0	0.0%	£0	19.7%	plus £0	19.7%	plus £0	19.7%	plus £0
851	P40048	Gainsborough Academy	18.8%	0.0%	£0	20.5%	0.0%	£0	0.0%	£0	0.0%	£0	20.5%	plus £0	20.5%	plus £0	20.5%	plus £0
856	P40001	Sleaford St Georges Academy	19.1%	0.0%	£0	20.9%	0.0%	£0	0.0%	£0	0.0%	£0	20.9%	plus £0	20.9%	plus £0	20.9%	plus £0
860	P40002	Skegness Academy	18.4%	0.0%	£26	20.0%		£15		£16		£16	20.0%	plus £15	20.0%	plus £16	20.0%	plus £16
863	P40004	West Grantham Federation	18.6%	0.0%	£11	20.2%		£14		£14		£15	20.2%	plus £14	20.2%	plus £14	20.2%	plus £15
864	P40005	Giles Academy	17.4%	0.0%	£6	19.5%		£7		£7		£7	19.5%	plus £7	19.5%	plus £7	19.5%	plus £7
865	P40006	Alford Queen Elizabeth Selective Academy	19.5%	0.0%	£0	21.2%	0.0%	£0	0.0%	£0	0.0%	£0	21.2%	plus £0	21.2%	plus £0	21.2%	plus £0
866	P40007	Caistor Grammar	18.7%	0.0%	£1	21.0%	0.0%	£0	0.0%	£0	0.0%	£0	21.0%	plus £0	21.0%	plus £0	21.0%	plus £0
867	P40008	Branston Community Academy	19.1%	0.0%	£0	20.9%	0.0%	£0	0.0%	£0	0.0%	£0	20.9%	plus £0	20.9%	plus £0	20.9%	plus £0
868	P40009	Bourne Abbey C of E Academy	19.0%	0.0%	£3	20.9%		£10		£10		£10	20.9%	plus £10	20.9%	plus £10	20.9%	plus £10
869	P40010	Welton William Farr CE Comprehensive School	19.2%	0.0%	£49	21.4%		£35		£35		£36	21.4%	plus £35	21.4%	plus £35	21.4%	plus £36
870	P40012	Grantham Walton Girls	19.8%	0.0%	£11	21.2%		£10		£10		£10	21.2%	plus £10	21.2%	plus £10	21.2%	plus £10
871	P40013	Lincoln Castle Academy	19.4%	0.0%	£18	21.1%		£19		£20		£20	21.1%	plus £19	21.1%	plus £20	21.1%	plus £20
872	P40011	Market Rasen De Aston School (Academy)	18.8%	0.0%	£3	20.7%	0.0%	£0	0.0%	£0	0.0%	£0	20.7%	plus £0	20.7%	plus £0	20.7%	plus £0
873	P40014	Tower Road Academy (Primary)	19.5%	0.0%	£17	20.3%		£5		£5		£5	20.3%	plus £5	20.3%	plus £5	20.3%	plus £5
874	P40015	Fosse Way Academy	19.0%	0.0%	£10	20.7%	0.0%	£0	0.0%	£0	0.0%	£0	20.7%	plus £0	20.7%	plus £0	20.7%	plus £0
875	P40017	North Kesteven School	18.7%	0.0%	£65	21.6%		£58		£60		£62	21.6%	plus £58	21.6%	plus £60	21.6%	plus £62
876	P40019	Sir Robert Pattinson Academy	18.8%	0.0%	£22	20.6%		£25		£25		£26	20.6%	plus £25	20.6%	plus £25	20.6%	plus £26
877	P40022	John Spendluffe Technology College	18.8%	0.0%	£26	20.7%		£20		£20		£21	20.7%	plus £20	20.7%	plus £20	20.7%	plus £21
878	P40018	Sleaford Carres Grammar School (Academy)	19.3%	0.0%	£30	21.2%		£36		£37		£38	21.2%	plus £36	21.2%	plus £37	21.2%	plus £38
879	P40020	Grantham Kings School	19.9%	0.0%	£13	21.6%		£2		£2		£2	21.6%	plus £2	21.6%	plus £2	21.6%	plus £2
881	P40016	Ermine Primary Academy	18.5%	0.0%	£9	20.3%		£10		£10		£10	20.3%	plus £10	20.3%	plus £10	20.3%	plus £10
882	P40023	Caistor Yarborough Academy	17.9%	0.0%	£9	20.0%		£3		£3		£3	20.0%	plus £3	20.0%	plus £3	20.0%	plus £3
883	P40024	Bourne Academy	19.4%	0.0%	£23	21.1%		£13		£14		£14	21.1%	plus £13	21.1%	plus £14	21.1%	plus £14
884	P40025	Lincoln Westgate Academy	18.4%	0.0%	£6	20.5%		£3		£3		£3	20.5%	plus £3	20.5%	plus £3	20.5%	plus £3
885	P40026	Lincoln Christs Hospital School (Academy)	19.5%	0.0%	£30	21.2%		£33		£34		£35	21.2%	plus £33	21.2%	plus £34	21.2%	plus £35

Employer / Pool code	Agresso code	Employer/Pool name	Contributions in payment (2019/2020)			Primary rate % 1 April 2020	Secondary Rate						Total Contribution Rate					
			Primary %	Secondary rate			2020/2021		2021/2022		2022/2023		2020/2021		2021/2022		2022/2023	
				(%)	(£000)	(£000)	(%)	(£000)	(%)	(£000)	(%)	(£000)	(%)	(£000)	% of pay	(£000)	% of pay	(£000)
Academies (cont.)																		
886	P40027	University Academy Holbeach	19.1%	0.0%	£40	20.9%		£39		£40		£41	20.9%	plus £39	20.9%	plus £40	20.9%	plus £41
887	P40028	Mount Street Academy	17.6%	0.0%	£11	20.2%		£10		£10		£10	20.2%	plus £10	20.2%	plus £10	20.2%	plus £10
888	P40029	Sleaford William Alvey	18.9%	0.0%	£4	20.4%		£2		£2		£2	20.4%	plus £2	20.4%	plus £2	20.4%	plus £2
890	P40036	Hartsholme Academy	16.1%	0.0%	£5	17.8%		£10		£10		£10	17.8%	plus £10	17.8%	plus £10	17.8%	plus £10
891	P40031	Kesteven & Sleaford High School Selective Academy	19.0%	0.0%	£18	21.2%		£18		£18		£18	21.2%	plus £18	21.2%	plus £18	21.2%	plus £18
892	P40032	Keystone Academy	19.5%	0.0%	£9	21.2%		£3		£3		£3	21.2%	plus £3	21.2%	plus £3	21.2%	plus £3
893	P40030	Stamford Welland Academy	20.6%	0.0%	£0	21.7%	-1.1%	£0	-1.1%	£0	-1.1%	£0	20.6%	plus £0	20.6%	plus £0	20.6%	plus £0
894	P40033	Stamford Malcolm Sargent Primary	18.5%	0.0%	£0	20.8%	0.0%	£0	0.0%	£0	0.0%	£0	20.8%	plus £0	20.8%	plus £0	20.8%	plus £0
895	P40034	Bourne Grammar	19.0%	0.0%	£31	21.3%		£29		£30		£31	21.3%	plus £29	21.3%	plus £30	21.3%	plus £31
896	P40035	St. John's Primary Academy	18.8%	0.0%	£16	21.1%		£13		£14		£14	21.1%	plus £13	21.1%	plus £14	21.1%	plus £14
897	P40037	The Deepings School	19.7%	0.0%	£0	21.1%	-1.4%	£0	-1.4%	£0	-1.4%	£0	19.7%	plus £0	19.7%	plus £0	19.7%	plus £0
40112	P40112	Keelby Primary Academy	19.7%	0.0%	£11	21.4%		£14		£14		£14	21.4%	plus £14	21.4%	plus £14	21.4%	plus £14
40114	P40114	Lincoln Anglican Academy Trust	16.4%	0.0%	£0	17.7%	-1.3%	£0	-1.3%	£0	-1.3%	£0	16.4%	plus £0	16.4%	plus £0	16.4%	plus £0
40115	P40115	Somercotes Academy	18.5%	0.0%	£28	18.7%		£28		£29		£29	18.7%	plus £28	18.7%	plus £29	18.7%	plus £29
40116	P40116	King Edward VI Grammar School (Louth)	19.0%	0.0%	£44	21.3%		£55		£57		£58	21.3%	plus £55	21.3%	plus £57	21.3%	plus £58
40117	P40117	St Lawrence School (Horncastle)	17.2%	0.0%	£30	19.3%		£28		£29		£29	19.3%	plus £28	19.3%	plus £29	19.3%	plus £29
40119	P40119	St Bernards School (Louth)	19.0%	0.0%	£59	19.7%		£55		£56		£58	19.7%	plus £55	19.7%	plus £56	19.7%	plus £58
40120	P40120	Aegir Specialist Academy	19.0%	0.0%	£35	21.0%		£37		£38		£39	21.0%	plus £37	21.0%	plus £38	21.0%	plus £39
40121	P40121	Warren Wood Specialist Academy	19.5%	0.0%	£34	20.5%		£24		£25		£26	20.5%	plus £24	20.5%	plus £25	20.5%	plus £26
40126	P40126	Spilsby Primary School	18.5%	0.0%	£10	21.2%		£25		£26		£26	21.2%	plus £25	21.2%	plus £26	21.2%	plus £26
40127	P40127	Gosberton House Academy	18.6%	0.0%	£23	18.9%		£21		£22		£22	18.9%	plus £21	18.9%	plus £22	18.9%	plus £22
40128	P40128	Theddlethorpe Primary School	21.5%	0.0%	£6	21.2%		£3		£3		£3	21.2%	plus £3	21.2%	plus £3	21.2%	plus £3
40129	P40129	South Witham Academy	20.6%	0.0%	£7	21.5%		£8		£8		£8	21.5%	plus £8	21.5%	plus £8	21.5%	plus £8
40131	P40131	Browns Church of England Primary School	21.7%	0.0%	£5	21.9%		£2		£2		£3	21.9%	plus £2	21.9%	plus £2	21.9%	plus £3
40133	P40133	Edenham Church of England School	21.3%	0.0%	£8	21.8%		£6		£6		£6	21.8%	plus £6	21.8%	plus £6	21.8%	plus £6
40134	P40134	Morton Church of England Primary School	20.8%	0.0%	£16	21.0%		£12		£12		£12	21.0%	plus £12	21.0%	plus £12	21.0%	plus £12
40143	P40143	Manor Farm Academy	17.4%	0.0%	£0	18.7%		£0		£0		£0	18.7%	plus £0	18.7%	plus £0	18.7%	plus £0
40148	P40148	Branston C of E Infants School	20.5%	0.0%	£3	20.8%		£2		£2		£2	20.8%	plus £2	20.8%	plus £2	20.8%	plus £2
40149	P40149	Whaplode C of E Primary School	19.9%	0.0%	£4	20.6%		£6		£6		£6	20.6%	plus £6	20.6%	plus £6	20.6%	plus £6
40151	P40151	The Marton Academy	20.5%	0.0%	£5	21.4%		£5		£6		£6	21.4%	plus £5	21.4%	plus £6	21.4%	plus £6
40153	P40153	Holy Trinity Church of England Primary	20.1%	0.0%	£6	21.2%		£6		£6		£6	21.2%	plus £6	21.2%	plus £6	21.2%	plus £6
40154	P40154	Bassingham Primary School	20.8%	0.0%	£8	22.0%		£8		£8		£8	22.0%	plus £8	22.0%	plus £8	22.0%	plus £8
40156	P40156	St Michaels Church of England Primary School	19.7%	0.0%	£9	20.1%		£14		£14		£15	20.1%	plus £14	20.1%	plus £14	20.1%	plus £15
40157	P40157	All Saints Academy Waddington	19.8%	0.0%	£7	21.1%		£9		£9		£9	21.1%	plus £9	21.1%	plus £9	21.1%	plus £9
40160	P40160	Holbeach Bank Academy	19.8%	0.0%	£1	20.7%		£2		£2		£2	20.7%	plus £2	20.7%	plus £2	20.7%	plus £2
40166	P40166	Boston St Mary's RC Primary Academy	18.6%	0.0%	£2	20.3%		£4		£4		£4	20.3%	plus £4	20.3%	plus £4	20.3%	plus £4
40167	P40167	St Mary's Catholic Primary Voluntary Academy	20.1%	0.0%	£4	21.2%		£7		£7		£7	21.2%	plus £7	21.2%	plus £7	21.2%	plus £7
40168	P40168	St Norberts Catholic Primary School (Academy)	19.1%	0.0%	£1	20.5%		£3		£3		£3	20.5%	plus £3	20.5%	plus £3	20.5%	plus £3

Employer / Pool code	Agresso code	Employer/Pool name	Contributions in payment (2019/2020)			Primary rate % 1 April 2020 2023	Secondary Rate						Total Contribution Rate								
			Primary %	Secondary rate			2020/2021		2021/2022		2022/2023		2020/2021			2021/2022			2022/2023		
				(%)	(£000)		(%)	(£000)	(%)	(£000)	(%)	(£000)	(%)	(£000)	% of pay	(£000)	% of pay	(£000)	% of pay	(£000)	
Academies (cont.)																					
Pool		CIT Academies	see below			19.9%		£216		£221		£227	19.9%	plus	£216	19.9%	plus	£221	19.9%	plus	£227
		- Grantham Sandon School	18.5%	0.0%	£31																
		- Grantham Ambergate School	18.0%	0.0%	£27																
		- Grantham Isaac Newton Primary School	19.3%	0.0%	£13																
		- The Phoenix Academy	18.9%	0.0%	£11																
		- The John Fielding Special School, Boston	17.9%	0.0%	£28																
		- The Garth School, Spalding	18.2%	0.0%	£24																
		- The Priory School, Spalding	18.4%	0.0%	£19																
		- Woodlands Academy	19.9%	0.0%	£34																
		- Caythorpe Primary	19.7%	0.0%	£5																
		- Chapel St Leonards Primary School	20.2%	0.0%	£6																
		- Poplar Farm School	17.2%	0.0%	£0																
Pool		Priory Academy Schools	see below			20.3%	0.0%	£0	0.0%	£0	0.0%	£0	20.3%	plus	£0	20.3%	plus	£0	20.3%	plus	£0
		- Grantham Huntingtower Community Primary	17.9%	3.0%	£0																
		- North Hykeham Ling Moor Academy	19.1%	0.0%	£7																
		- Priory Federation of Academies	18.2%	0.0%	£0																
		- Heighington Millfield Primary Academy	18.9%	0.0%	£3																
		- The Priory Pembroke	20.1%	0.0%	£15																
		- Redwood Primary School	20.5%	0.0%	£4																
Pool		Homcastle Education Trust	see below			20.2%		£66		£68		£70	20.2%	plus	£66	20.2%	plus	£68	20.2%	plus	£70
		- Homcastle Queen Elizabeth Grammar School	18.9%	0.0%	£23																
		- Homcastle Bannovallum	18.4%	0.0%	£38																
		- Frithville Primary School	19.1%	0.0%	£2																
		- New York Primary School	18.5%	0.0%	£1																
Pool		David Ross	18.0%	0.0%	£152	20.4%		£112		£115		£118	20.4%	plus	£112	20.4%	plus	£115	20.4%	plus	£118
		- Spilsby Eresby School																			
		- Grantham Charles Read Academy																			
		- Tattershall Barnes Wallis Academy																			
		- Hogsthorpe Community Primary Academy																			
		- Spilsby King Edward IV Academy																			
		- Skegness Grammar Academy																			
		- Ingoldsby Academy																			
		- Thomas Middlecott Academy																			
Pool		Tall Oaks	18.5%	0.0%	£9	20.3%		£11		£11		£11	20.3%	plus	£11	20.3%	plus	£11	20.3%	plus	£11
		- Mercer's Wood Academy																			
		- Whites Wood Academy																			
		- Castle Wood Academy (Gainsborough)																			
Pool		Tollbar MAT (Louth Academy)	see below			20.5%		£43		£44		£45	20.5%	plus	£43	20.5%	plus	£44	20.5%	plus	£45
		- Louth Cordeaux Academy	18.4%	0.0%	£26																
		- Louth Academy	19.4%	0.0%	£46																
Pool		BWAF	see below			19.4%		£28		£29		£29	19.4%	plus	£28	19.4%	plus	£29	19.4%	plus	£29
		- Phoenix Family of Schools	18.2%	0.0%	£0																
		- Boston Witham Academies Federation	17.7%	0.5%	£57																
Pool		Wellspring Academy Trust	see below			19.4%		£37		£38		£39	19.4%	plus	£37	19.4%	plus	£38	19.4%	plus	£39
		- Springwell Lincoln City Academy	18.5%	0.0%	£10																
		- Lacey Gardens Junior School (Academy)	18.5%	0.0%	£11																
		- Eastfield Infant and Nursery School (Academy)	19.5%	0.0%	£12																

Employer / Pool code	Agresso code	Employer/Pool name	Contributions in payment (2019/2020)			Primary rate % 1 April 2020 2023	Secondary Rate						Total Contribution Rate					
			Primary %	Secondary rate			2020/2021		2021/2022		2022/2023		2020/2021		2021/2022		2022/2023	
				(%)	(£000)		(%)	(£000)	(%)	(£000)	(%)	(£000)	% of pay	(£000)	% of pay	(£000)	% of pay	(£000)
Resolution Bodies																		
523	P30077	BG Lincoln Ltd	20.7%	0.0%	£2	22.8%		£1		£1		£1	22.8%	plus £1	22.8%	plus £1	22.8%	plus £1
861	P30072	Public Sector Partnership Services Ltd.	21.8%	0.0%	£0	19.9%		£91		£93		£96	19.9%	plus £91	19.9%	plus £93	19.9%	plus £96
Pool		Small Scheduled Bodies Pool	19.3%	2.3%	£0	21.1%	1.4%		1.4%		1.4%		22.5%	plus £0	22.5%	plus £0	22.5%	plus £0
		Billinghay Parish Council	19.3%	2.3%	£0	21.1%	1.4%		1.4%		1.4%		22.5%	plus £0	22.5%	plus £0	22.5%	plus £0
		Bourne Town Council	19.3%	2.3%	£0	21.1%	1.4%		1.4%		1.4%		22.5%	plus £0	22.5%	plus £0	22.5%	plus £0
		Bracebridge Heath Parish Council	19.3%	2.3%	£0	21.1%	1.4%		1.4%		1.4%		22.5%	plus £0	22.5%	plus £0	22.5%	plus £0
		Cherry Willingham Parish Council	19.3%	2.3%	£0	21.1%	1.4%		1.4%		1.4%		22.5%	plus £0	22.5%	plus £0	22.5%	plus £0
		Crowland Parish Council	19.3%	2.3%	£0	21.1%	1.4%		1.4%		1.4%		22.5%	plus £0	22.5%	plus £0	22.5%	plus £0
		Deeping St James Parish Council	19.3%	2.3%	£0	21.1%	1.4%		1.4%		1.4%		22.5%	plus £0	22.5%	plus £0	22.5%	plus £0
		Gainsborough Town Council	19.3%	2.3%	£0	21.1%	1.4%		1.4%		1.4%		22.5%	plus £0	22.5%	plus £0	22.5%	plus £0
		Gedney Parish Council	19.3%	2.3%	£0	21.1%	1.4%		1.4%		1.4%		22.5%	plus £0	22.5%	plus £0	22.5%	plus £0
		Greetwell Parish Council	19.3%	2.3%	£0	21.1%	1.4%		1.4%		1.4%		22.5%	plus £0	22.5%	plus £0	22.5%	plus £0
		Horncastle Town Council	19.3%	2.3%	£0	21.1%	1.4%		1.4%		1.4%		22.5%	plus £0	22.5%	plus £0	22.5%	plus £0
		Ingoldmells Parish Council	19.3%	2.3%	£0	21.1%	1.4%		1.4%		1.4%		22.5%	plus £0	22.5%	plus £0	22.5%	plus £0
		Louth Town Council	19.3%	2.3%	£0	21.1%	1.4%		1.4%		1.4%		22.5%	plus £0	22.5%	plus £0	22.5%	plus £0
		Mablethorpe & Sutton Town Council	19.3%	2.3%	£0	21.1%	1.4%		1.4%		1.4%		22.5%	plus £0	22.5%	plus £0	22.5%	plus £0
		Market Deeping Town Council	19.3%	2.3%	£0	21.1%	1.4%		1.4%		1.4%		22.5%	plus £0	22.5%	plus £0	22.5%	plus £0
		Nettleham Parish Council	19.3%	2.3%	£0	21.1%	1.4%		1.4%		1.4%		22.5%	plus £0	22.5%	plus £0	22.5%	plus £0
		North Hykeham Town Council	19.3%	2.3%	£0	21.1%	1.4%		1.4%		1.4%		22.5%	plus £0	22.5%	plus £0	22.5%	plus £0
		Pinchbeck Parish Council	19.3%	2.3%	£0	21.1%	1.4%		1.4%		1.4%		22.5%	plus £0	22.5%	plus £0	22.5%	plus £0
		Skegness Town Council	19.3%	2.3%	£0	21.1%	1.4%		1.4%		1.4%		22.5%	plus £0	22.5%	plus £0	22.5%	plus £0
		Skellingthorpe Parish Council	19.3%	2.3%	£0	21.1%	1.4%		1.4%		1.4%		22.5%	plus £0	22.5%	plus £0	22.5%	plus £0
		Sleaford Town Council	19.3%	2.3%	£0	21.1%	1.4%		1.4%		1.4%		22.5%	plus £0	22.5%	plus £0	22.5%	plus £0
		Stamford Town Council	19.3%	2.3%	£0	21.1%	1.4%		1.4%		1.4%		22.5%	plus £0	22.5%	plus £0	22.5%	plus £0
		Sudbrooke Parish Council	19.3%	2.3%	£0	21.1%	1.4%		1.4%		1.4%		22.5%	plus £0	22.5%	plus £0	22.5%	plus £0
		Sutton Bridge Parish Council	19.3%	2.3%	£0	21.1%	1.4%		1.4%		1.4%		22.5%	plus £0	22.5%	plus £0	22.5%	plus £0
		Washingborough Parish Council	19.3%	2.3%	£0	21.1%	1.4%		1.4%		1.4%		22.5%	plus £0	22.5%	plus £0	22.5%	plus £0
		Welton-By-Lincoln Parish Council	19.3%	2.3%	£0	21.1%	1.4%		1.4%		1.4%		22.5%	plus £0	22.5%	plus £0	22.5%	plus £0
		Woodhall Spa Parish Council	19.3%	2.3%	£0	21.1%	1.4%		1.4%		1.4%		22.5%	plus £0	22.5%	plus £0	22.5%	plus £0
Transferee Admission Bodies																		
547	P20028	Magna Vitae Leisure Trust	14.9%	0.0%	£0	21.1%	-4.6%	£0	-4.6%	£0	-4.6%	£0	16.5%	plus £0	16.5%	plus £0	16.5%	plus £0
826	P20019	Active Nation	26.9%	0.0%	£6	33.1%	0.0%	£0	0.0%	£0	0.0%	£0	33.1%	plus £0	33.1%	plus £0	33.1%	plus £0
889	P20023	Edwards and Blake Ltd	25.9%	0.0%	£5	32.7%	0.0%	£5	0.0%	£5	0.0%	£5	32.7%	plus £5	32.7%	plus £5	32.7%	plus £5
20027	P20027	Making Space	22.0%	0.0%	£0	30.4%	0.0%	£0	0.0%	£0	0.0%	£0	30.4%	plus £0	30.4%	plus £0	30.4%	plus £0
20030	P20030	Vinci Construction UK Limited	28.8%	0.0%	£0	35.2%	-35.2%	£0	0.0%	£0	0.0%	£0	0.0%	plus £0	35.2%	plus £0	35.2%	plus £0
20036	P20036	Compass Contract Services(UK) Ltd	30.2%	0.0%	£0	31.8%	-31.8%	£0	0.0%	£0	0.0%	£0	0.0%	plus £0	31.8%	plus £0	31.8%	plus £0
20037	P20037	Future Cleaning Services	29.1%	0.0%	£0	32.8%	-2.5%	£0	0.0%	£0	0.0%	£0	30.3%	plus £0	32.8%	plus £0	32.8%	plus £0
20038	P20038	Taylor Shaw (Branston Academy)	31.3%	0.0%	£0	33.9%	-2.2%	£0	0.0%	£0	0.0%	£0	31.7%	plus £0	33.9%	plus £0	33.9%	plus £0
20043	P20043	Easy Clean Contractors (Linchfield)	30.4%	0.0%	£0	31.7%	-31.7%	£0	0.0%	£0	0.0%	£0	0.0%	plus £0	31.7%	plus £0	31.7%	plus £0
20044	P20044	Cater Link (West Grantham Academy)	32.2%	0.0%	£0	32.1%	-32.1%	£0	0.0%	£0	0.0%	£0	0.0%	plus £0	32.1%	plus £0	32.1%	plus £0
20045	P20045	Outspoken Training	31.5%	0.0%	£0	35.5%	-15.6%	£0	0.0%	£0	0.0%	£0	19.9%	plus £0	35.5%	plus £0	35.5%	plus £0
20049	P20049	Easy Clean (Baston Primary)	37.3%	0.0%	£0	33.7%	0.0%	£2	0.0%	£2	0.0%	£2	33.7%	plus £2	33.7%	plus £2	33.7%	plus £2
20050	P20050	Nightingale Cleaning Limited	30.4%	0.0%	£0	32.3%	0.0%	£0	0.0%	£0	0.0%	£0	32.3%	plus £0	32.3%	plus £0	32.3%	plus £0
20055	P20055	Mellors Catering	29.2%	0.0%	£0	25.7%	0.0%	£1	0.0%	£1	0.0%	£1	25.7%	plus £1	25.7%	plus £1	25.7%	plus £1

### Further comments

- Contributions expressed as a percentage of payroll should be paid into Lincolnshire Pension Fund (“the Fund”) at a frequency in accordance with the requirements of the Regulations;
- Further sums should be paid to the Fund to meet the costs of any early retirements and/or augmentations using methods and factors issued by us from time to time or as otherwise agreed.
- Payments may be required to be made to the Fund by employers to meet the capital costs of any ill-health retirements that exceed those allowed for within our assumptions. If an employer has ill health liability insurance in place with a suitable insurer and provides satisfactory evidence to the Administering Authority, then their certified contribution rate may be reduced by the value of their insurance premium, for the period the insurance is in place.
- The certified contribution rates represent the **minimum** level of contributions to be paid. Employing authorities may pay further amounts at any time and future periodic contributions may be adjusted on a basis approved by the Fund Actuary.
- There has been significant volatility in the financial markets during February and March 2020 as a result of the COVID-19 pandemic. This volatility may impact funding balance sheets for those employers planning to exit the Fund during the period covered by this Rates and Adjustments Certificate. In order to effectively manage employer exits from the Fund, the Administering Authority may exercise its right to revisit the contribution rates for employers that are expected to cease participation in the Fund before 31 March 2023. The employer will be contacted by the Administering Authority in this instance.



Signature:

Name: Peter Summers

Qualification: Fellow of the Institute and Faculty of Actuaries

Firm: Hymans Robertson LLP  
20 Waterloo Street  
Glasgow  
G2 6DB

Date: 27 March 2020



## Appendix 4 – Section 13 dashboard

The following information has been provided to assist the Government Actuary's Department in complying with Section 13 of the Public Service Pensions Act.

Item	
<b>Past service funding position - local funding basis</b>	
Funding level (assets/liabilities)	93%
Funding level (change since last valuation)	16% increase
Asset value used at the valuation (£)	2,352,980,000
Value of liabilities (£)	2,535,683,000
Surplus (deficit) (£)	(182,703,000)
Discount rate(s)	4.0% p.a.
Assumed pension increases (CPI)	2.3% p.a.
Method of derivation of discount rate, plus any changes since previous valuation	There is a 71% likelihood that the Fund's investments will return at least 4.0% over the next 20 years based on a stochastic asset projection. The assumption at the 2016 valuation was 1.8% above the yield available on long-dated fixed interest gilts.
Assumed life expectancies at age 65:	
Average life expectancy for current pensioners - men currently age 65	21.4 years
Average life expectancy for current pensioners - women currently age 65	23.7 years
Average life expectancy for future pensioners - men currently age 45	22.4 years
Average life expectancy for future pensioners - women currently age 45	25.2 years
<b>Past service funding position - SAB basis (for comparison purposes only)</b>	
Market value of assets (£)	2,352,980,000
Value of liabilities (£)	2,287,949,000
Funding level on SAB basis (assets/liabilities)	103%
Funding level on SAB basis (change since last valuation)	10% increase
<b>Contribution rates payable</b>	
Primary contribution rate	18.6% of pay
Secondary contribution rate (cash amounts in each year in line with CIPFA guidance):	
Secondary contribution rate 2020/21 (£)	22,875,000
Secondary contribution rate 2021/22 (£)	25,727,000
Secondary contribution rate 2022/23 (£)	28,687,000
Giving total expected contributions:	
Total expected contributions 2020/21 (£ figure based on assumed payroll of £342.2m)	86,528,000
Total expected contributions 2021/22 (£ figure based on assumed payroll of £349.1m)	90,653,000
Total expected contributions 2022/23 (£ figure based on assumed payroll of £356.0m)	94,911,000
Average employee contribution rate (% of pay)	6.1% of pay
Employee contribution rate (£ p.a. figure based on assumed payroll of £342.2m)	20,949,000
<b>Additional information</b>	
Percentage of liabilities relating to employers with deficit recovery periods of longer than 20 years	0%
Percentage of total liabilities that are in respect of Tier 3 employers	11%