

Parish: Binbrook; Brookenby; Kirmond le Mire; Ludford; North Willingham; Stainton le Vale; Tealby

Title: Land at Manor Farm, Vale Farm, Bayons Manor Farm, Moor Farm, Mill Farm, Hall Farm, Orford Priory Farm, Manor Farm and South Farm

Reference number: CA/7/1/199

HIGHWAYS ACT 1980, SECTION 31 (6) – DEPOSITED MAPS, HIGHWAYS STATEMENT AND HIGHWAYS DECLARATIONS

Date of deposit of map and highways statement 20.03.2003

Depositor's name and address Mr E Tyson, 14 Bolton Street, Piccadilly, London, W1J 8BF, Managing Director of Sir Richard Sutton's Settled Estates

Dates of deposit of highways declarations and names and addresses of depositors (1) 29.09.2003: Mr E Tyson, 14 Bolton Street, Piccadilly, London, W1J 8BF, Managing Director of Sir Richard Sutton's Settled Estates

Date deposit expires: 28.09.2013

GEOGRAPHIC LOCATION

Grid Reference: TF158944, TF163919, TF167935, TF168909, TF172949, TF179948, TF179948, TF180908, TF184933, TF190948, TF191914, TF191951

Address and postcode of buildings on the deposited land Stainton Hall, Stainton le Vale, LN8 6HP; 1 Ivy Farm Cottages, Kirmond le Mire, LN8 6HZ; 2 Ivy Farm Cottages, Kirmond le Mire, LN8 6HZ; Ivy Farm, Kirmond le Mire, LN8 6HZ; Ivy House, Kirmond le Mire, LN8 6HZ; Manor Farm, Kirmond le Mire, LN8 6HZ; The Manna House, Kirmond le Mire, LN8 6HZ; Priory Farm, Stainton le Vale, LN8 6HW, Manor Farm, Stainton le Vale, LN8 6HP; Hall, Stainton le Vale, LN8 6HP; South Farm, Stainton le Vale, LN8 6HP; Bramble Cottage, Stainton le Vale, LN8 6HP; Workshop, Stainton le Vale, LN8 6HP; School House, Stainton le Vale, LN8 6HP; Vale Farm, Caistor Lane, Tealby, LN8 3XN; Canellun, Tealby, LN8 3XN; Bayons Park, Tealby, LN8 3YF; Bayons Lodge, Tealby, LN8 3XT; Top Lodge, Tealby, LN8 3XT; Manor Farm, Tealby, LN8 3XT; Moor Farm, Ludford, LN8 6AA

District East Lindsey, West Lindsey

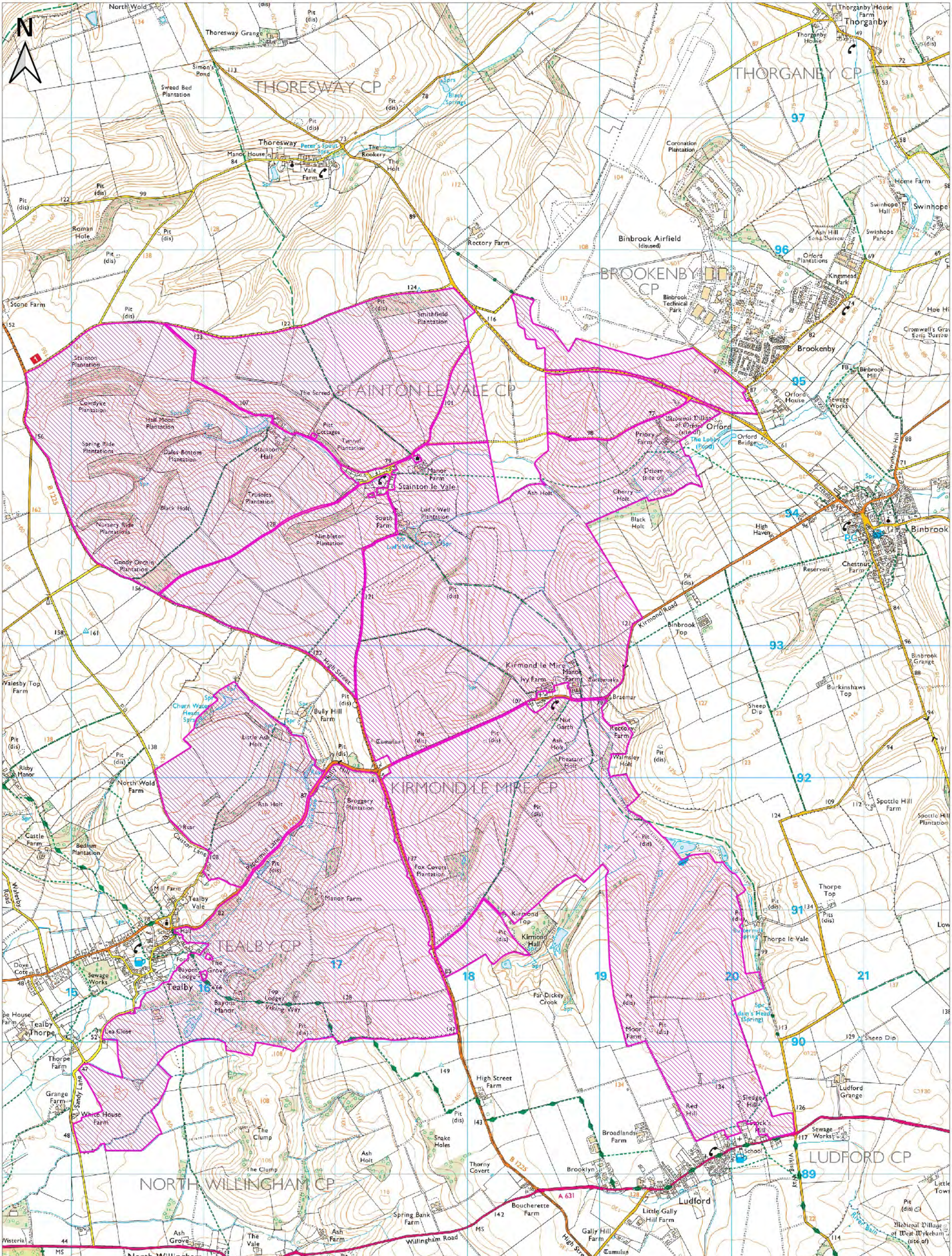
Nearest city or town Louth, Market Rasen

ENQUIRIES ABOUT THE REGISTER OR DEPOSITS

Enquiries concerning the register or the deposits lodged with the County Council should be made to the Definitive Map Officer at Lincolnshire County Council's Countryside Services Section by email to countryside_access@lincolnshire.gov.uk or by telephone on 01522 782070.

INFORMATION ABOUT THE REGISTER OF DEPOSITS

The County Council is required by law to keep and maintain a register of highways statements and highways declarations deposited under section 31 (6) of the Highways Act 1980 and landowner statements deposited under section 15A (1) of the Commons Act 2006. The register is available for public inspection on its website and in a paper copy format, together with copies of the deposited documents. Details, including names, addresses and the location of land relating to an application, which may be considered to be personal information, will therefore be in the public domain. This requirement overrides any entitlement a depositor and landowner may otherwise have under the Data Protection Act 1998 to prevent the publication of such information.



Lincolnshire County Council,
 Countryside Services,
 Lancaster House,
 36 Orchard Street,
 Lincoln, LN1 1XX

Deposited land at several farms in Binbrook, Brookenby, Kirmond le Mire, Ludford, North Willingham, Stainton le Vale and Tealby

Grid Ref: TF176927

Ref: CA7/1/199

Scale: 1: 25,000 @A3

Legend

 Deposited land

This map is reproduced from Ordnance Survey materials with the permission of Ordnance Survey on behalf of the Controller of Her Majesty's Stationery Office. Crown copyrights. Unauthorised reproduction infringes Crown Copyright and may lead to prosecution or civil proceedings. Lincolnshire County Council Licence No. 100025370

DEPOSIT OF STATEMENT AND MAP

SECTION 31(6) HIGHWAYS ACT 1980

TO: Lincolnshire County Council, Highways and Planning Directorate, 4th Floor, City Hall, Beaumont Fee, LINCOLN, LN1 1DN

1. We are and have been since 1982 the owner within the meaning of the above section of the land known as Manor Farm in the Parish Kirmond-le-Mire, Vale Farm and Bayons Manor Farm in the Parish of Tealby, Moor Farm and Mill Farm in the Parish of Ludford, Hall Farm, Orford Priory Farm, Manor Farm and South Farm in the Parish of Stainton-le-Vale more particularly delineated on the map accompanying this statement and thereon edged red.
2. The aforementioned land lies in the Parishes of Binbrook, Kirmond le Mire, Ludford, Stainton le Vale and Tealby.
3. The ways coloured green on the said map have been dedicated as bridleways.
4. The ways coloured purple on the said map have been dedicated as footpaths.
5. No other ways over the land have been dedicated as highways.
6. The deposit shall comprise this statement and accompanying map.

Signed:

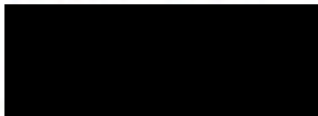


Name: Evan John Tyson (Managing Director, Sir Richard Sutton's Settled Estates)

Address: 14 Bolton Street, Piccadilly, London, W1J 8BF

Date: 12th March 2003

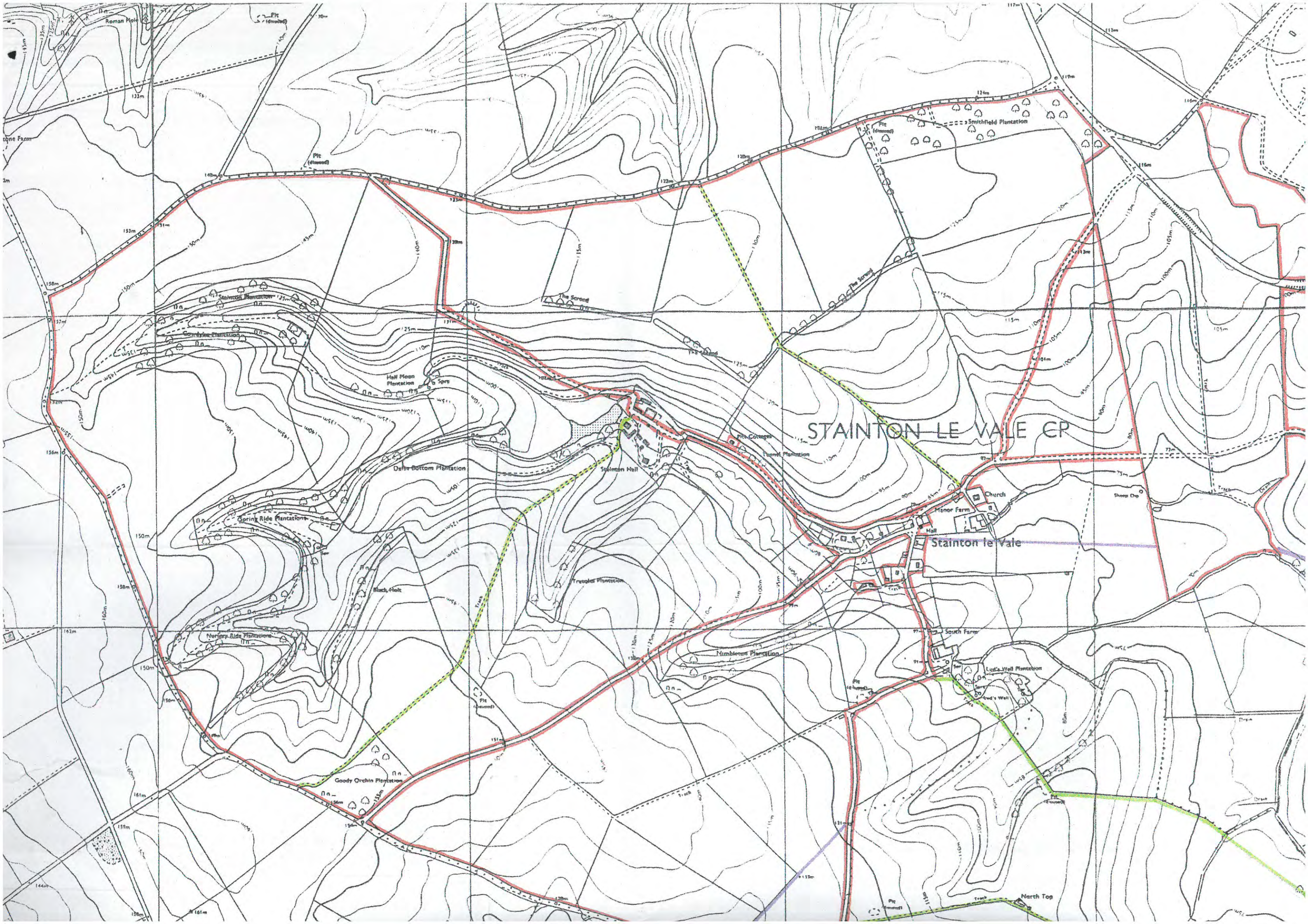
Signed (witness):



Name (of witness): Nicholas J.C. Pollard

Address (of witness): 14 Bolton Street
London W1J 8BF

Occupation: Solicitor



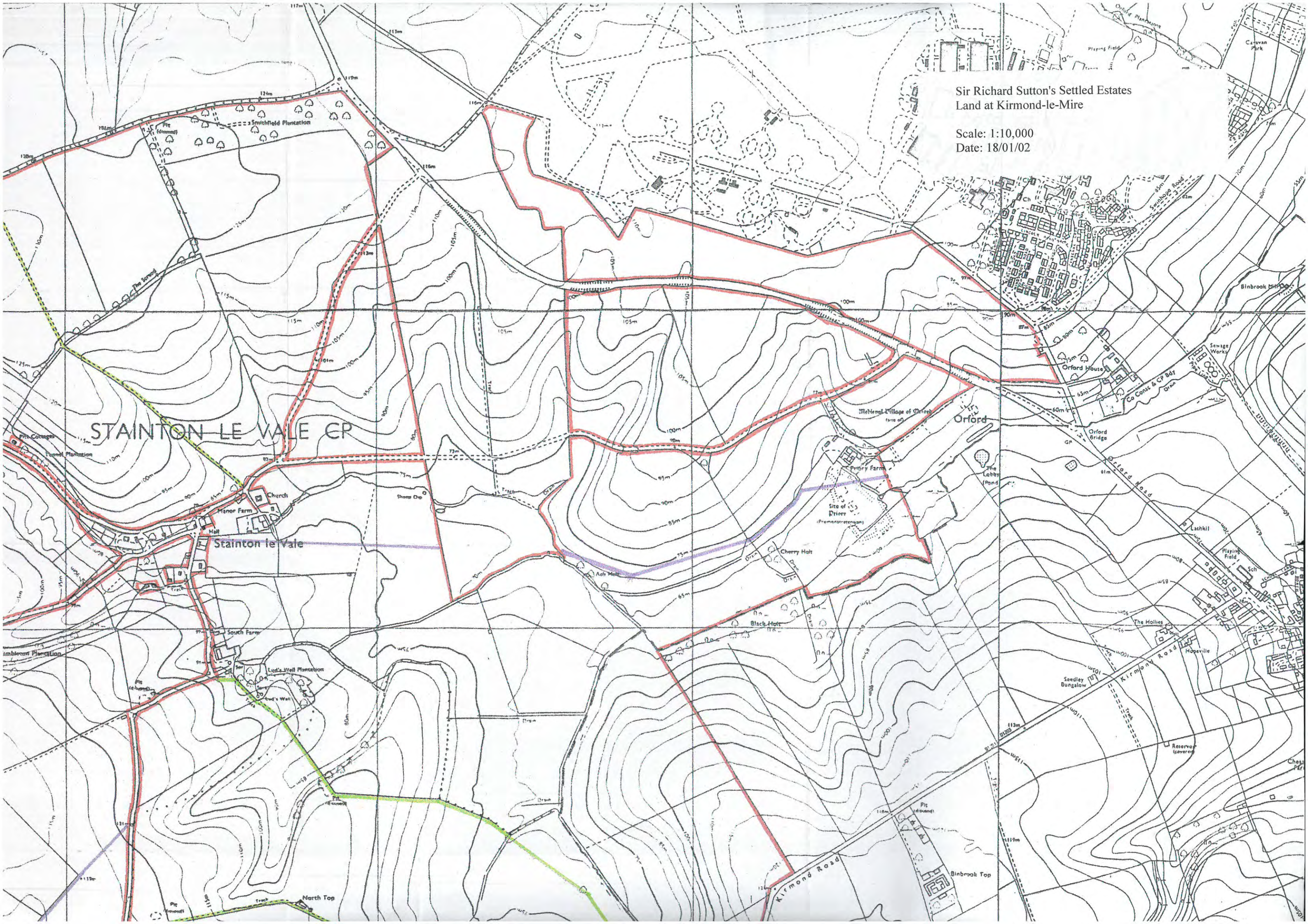
STAINTON LE VALE CP

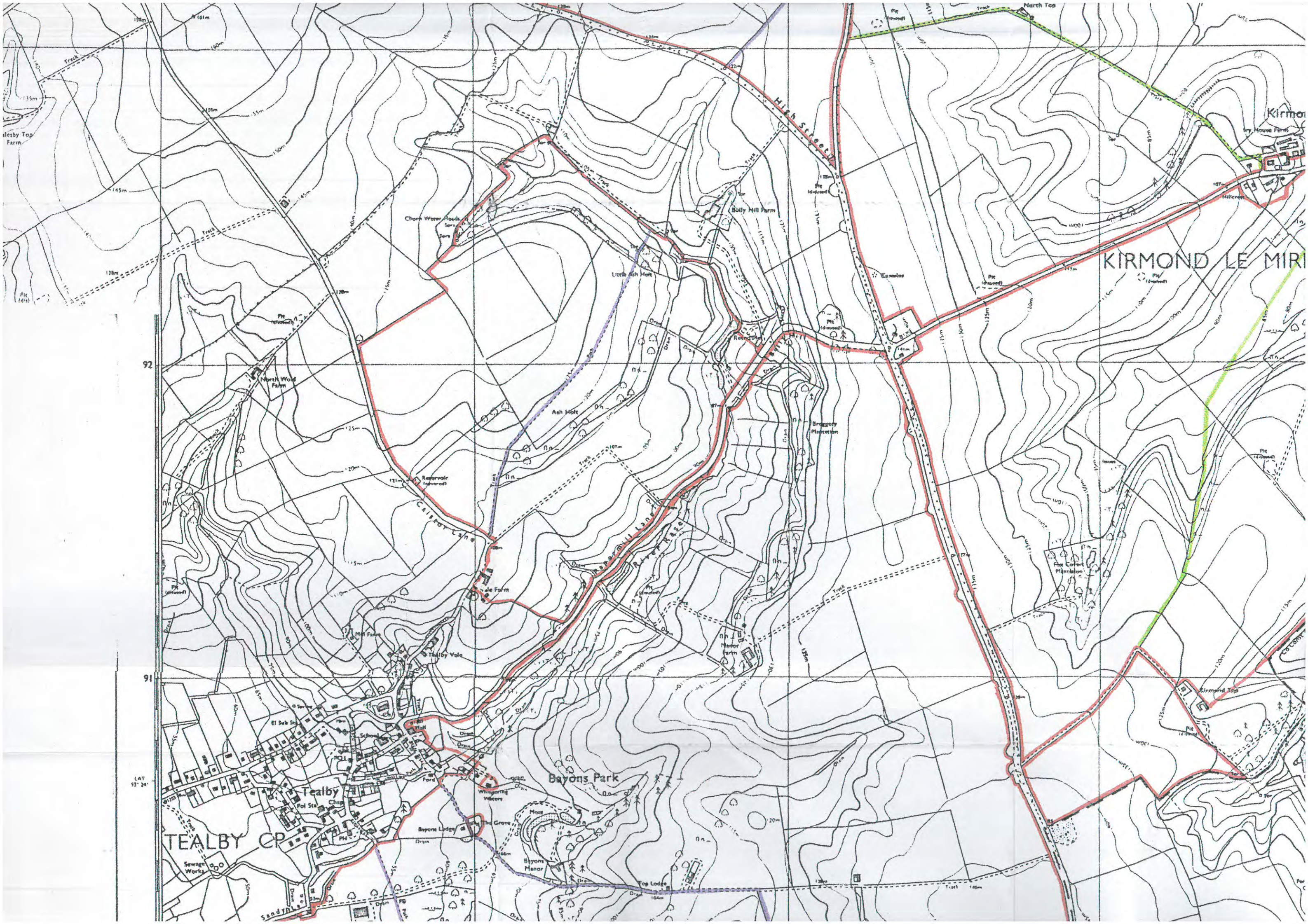
Stainton le Vale

North Top

Sir Richard Sutton's Settled Estates
Land at Kirmond-le-Mire

Scale: 1:10,000
Date: 18/01/02





92

91

LAT 51° 24'

TEALBY CP

Tealby

Bayons Park

Bolly Hill Farm

KIRMOND LE MIRIS

Kirmo

ry House Farm

Hillside

North Top

Pic (dashed)

Pic (dashed)

Pic (dashed)

Pic (dashed)

Pic (dashed)

Pic (dashed)

Pic (dashed)

Pic (dashed)

Pic (dashed)

Pic (dashed)

Pic (dashed)

Pic (dashed)

Pic (dashed)

Pic (dashed)

Pic (dashed)

Pic (dashed)

Pic (dashed)

Pic (dashed)

Pic (dashed)

Pic (dashed)

Pic (dashed)

Pic (dashed)

Pic (dashed)

Pic (dashed)

Pic (dashed)

Pic (dashed)

Pic (dashed)

Pic (dashed)

Pic (dashed)

Pic (dashed)

Pic (dashed)

Pic (dashed)

Pic (dashed)

Pic (dashed)

Pic (dashed)

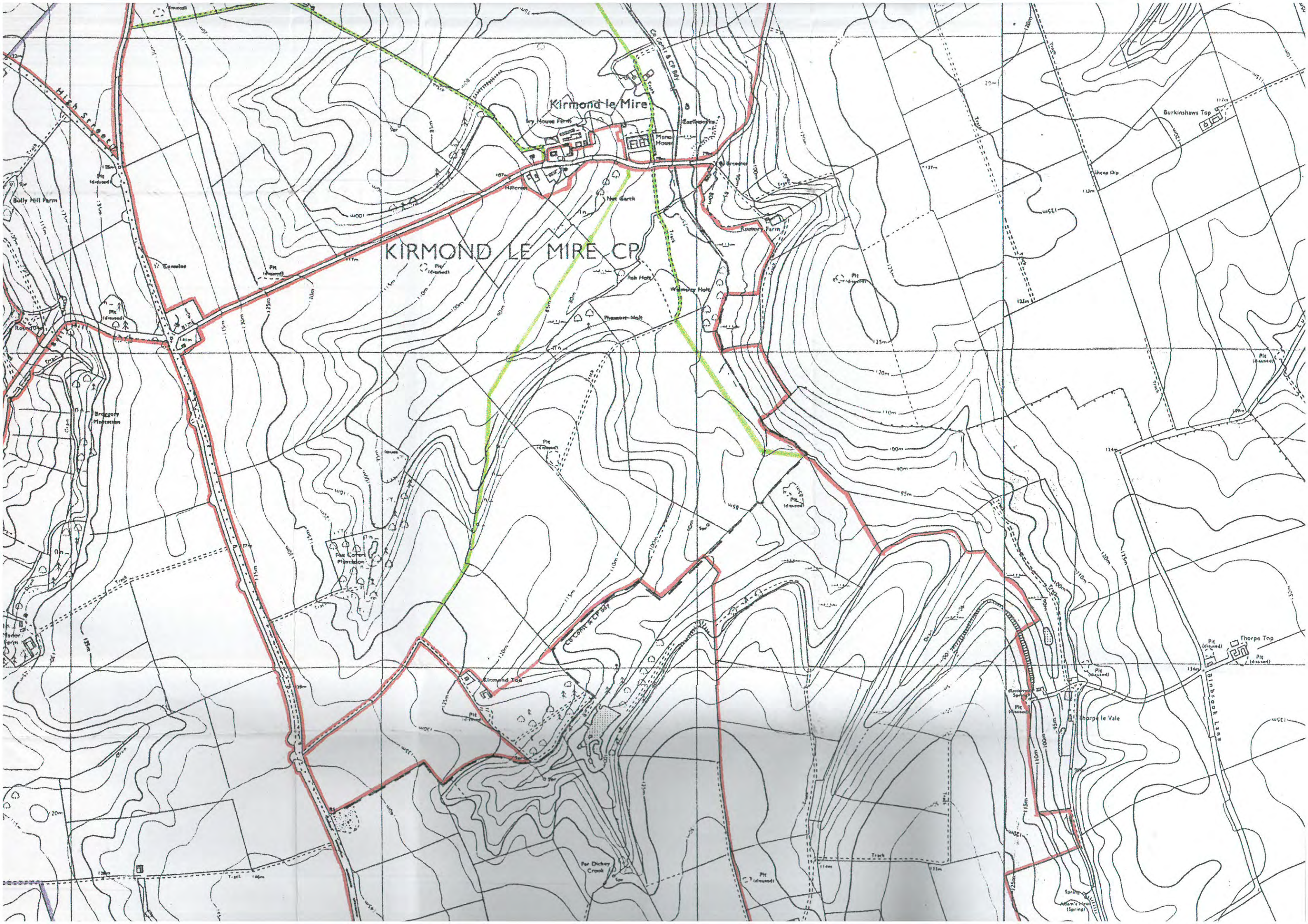
Pic (dashed)

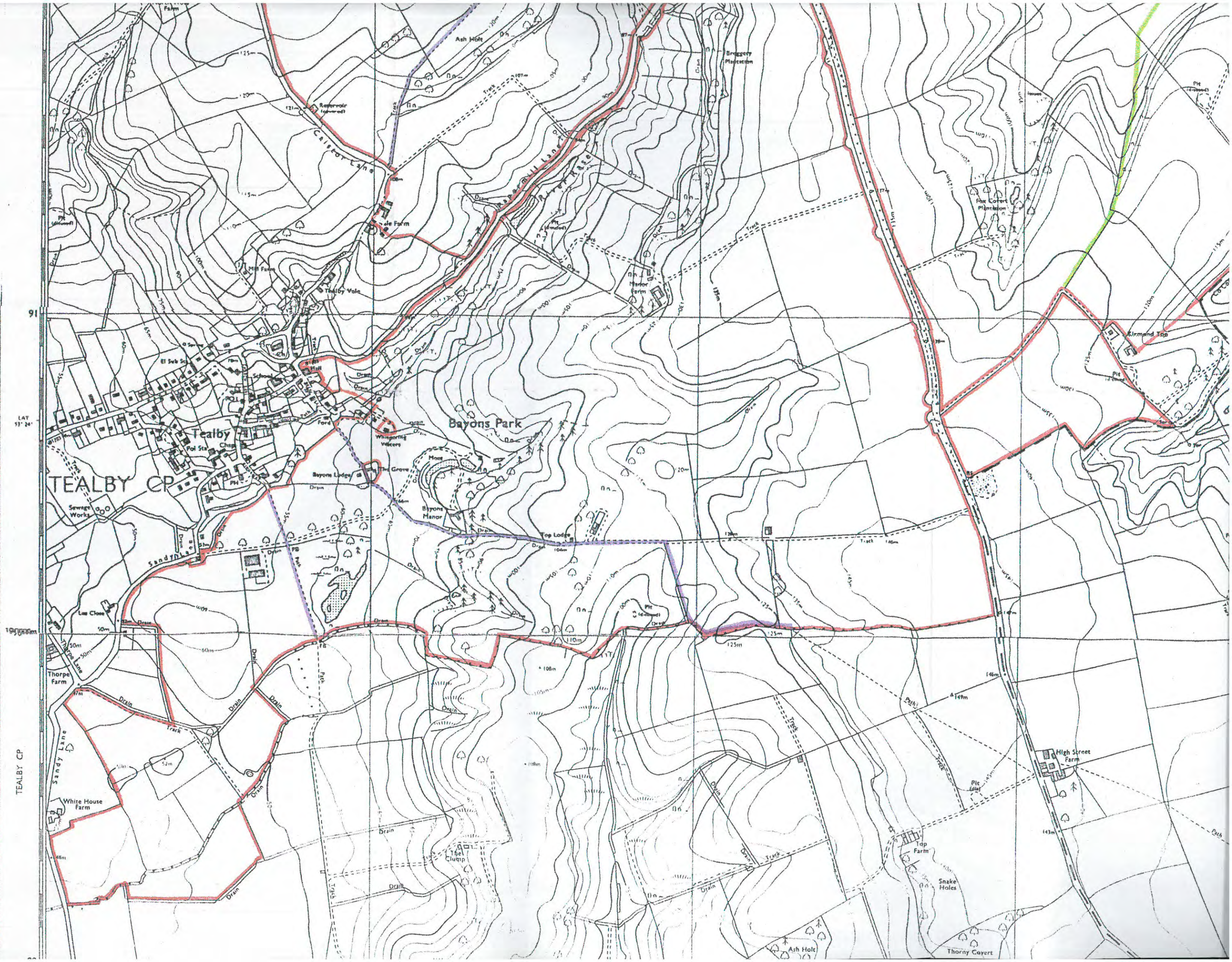
Pic (dashed)

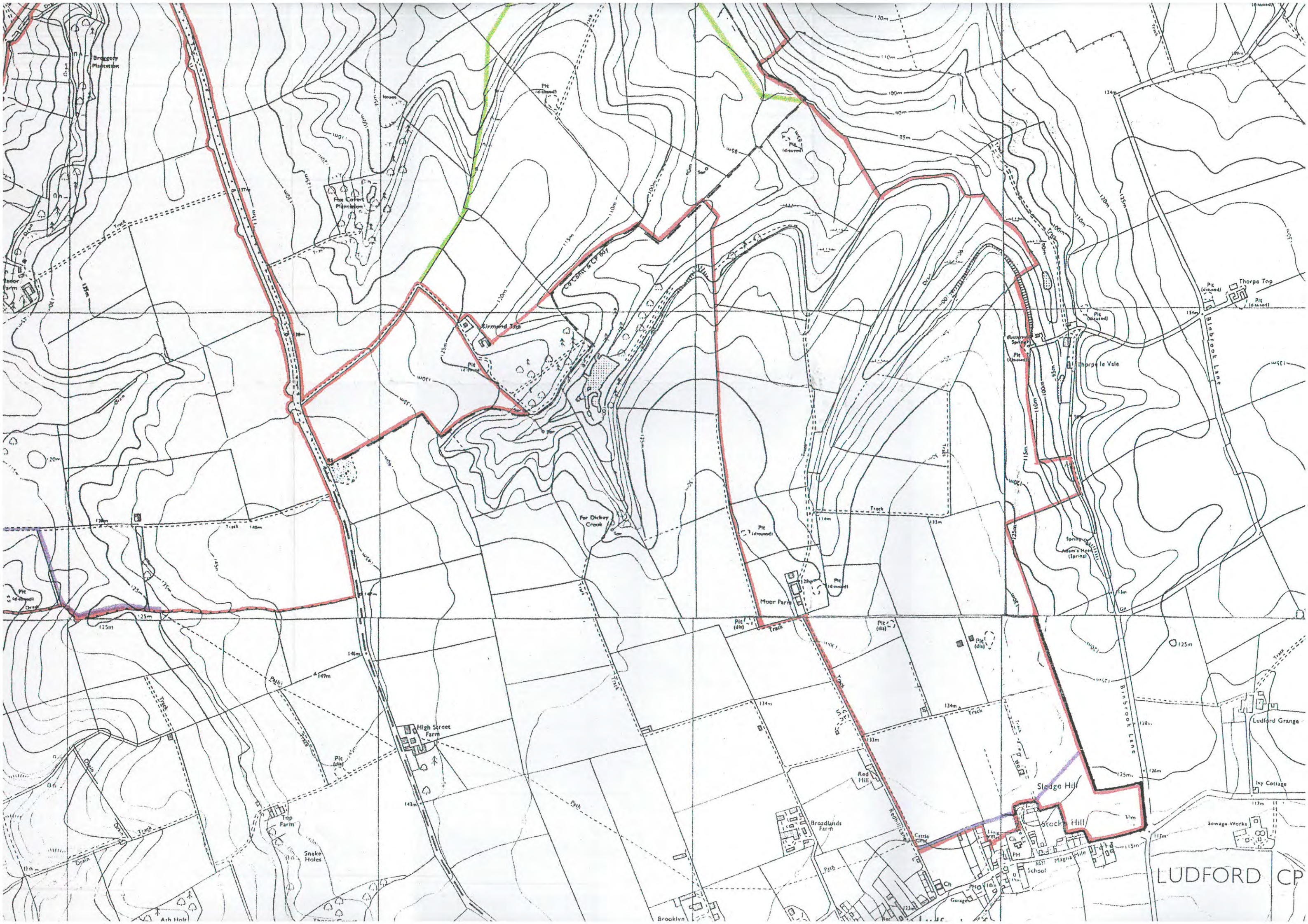
Pic (dashed)

Pic (dashed)

Pic (dashed)







STATUTORY DECLARATION

SECTION 31 (6) OF THE HIGHWAYS ACT 1980

I EVAN JOHN TYSON of 14 Bolton Street London W1J 8BF DO SOLEMNLY AND SINCERELY DECLARE as follows:

1. I am and have been since 16th June 1987 a director of Sir Richard Sutton's Settled Estates ("the Company") which is and has been since 1982 the owner of the land known as Manor Farm in the Parish of Kirmond-le-Mire, Vale Farm and Bayons Manor Farm in the Parish of Tealby, Moor Farm and Mill Farm in the Parish of Ludford, Hall Farm, Orford Priory Farm, Manor Farm and South Farm in the Parish of Stainton-le-Vale more particularly delineated on the map accompanying this declaration and thereon edged red.
2. On 18th March 2003 the Company deposited with Lincolnshire County Council, being the appropriate Council, a statement accompanied by a map delineating the Company's property by red edging which stated that the ways coloured green on the said map and on the map accompanying this declaration had been dedicated as bridleways, the ways coloured purple on the said map and on the map accompanying this declaration had been dedicated as footpaths and that no other ways had been dedicated as highways over its property.
3. No additional ways have been dedicated over the land edged red on the map accompanying this declaration since the statement dated 18th March 2003 referred to in paragraph 2 above and at the present time the Company has no intention of dedicating any more public rights of way over its property.

AND I MAKE this solemn declaration on the 28th AUGUST 2003 conscientiously believing it to be true and by virtue of the Statutory Declarations Act 1835.

Declared at

**ARNOLD FOOKS CHADWICK
15 BOLTON STREET
LONDON W1J 8AB
Tel: 020 7499 3007 Fax: 020 7499 3863**

Before me

(Commissioner for Oaths/Justice of the Peace/Solicitor)

Timothy O'Callaghan

STATUTORY DECLARATION

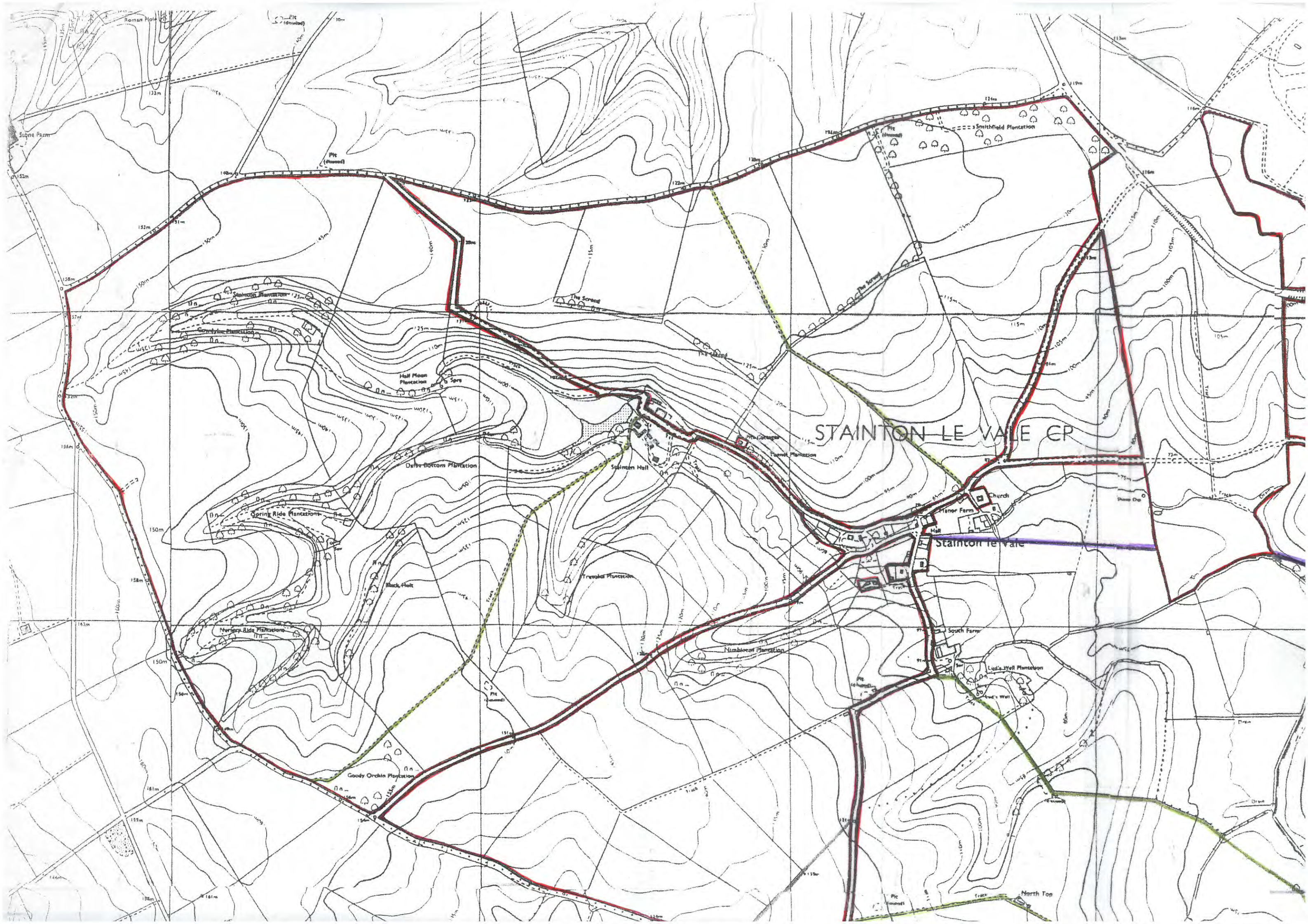
of

EVAN JOHN TYSON

This is the map referred to in paragraph 1 of the Statutory Declaration of Evan John Tyson dated ~~28th~~ *AUGUST* 2003.

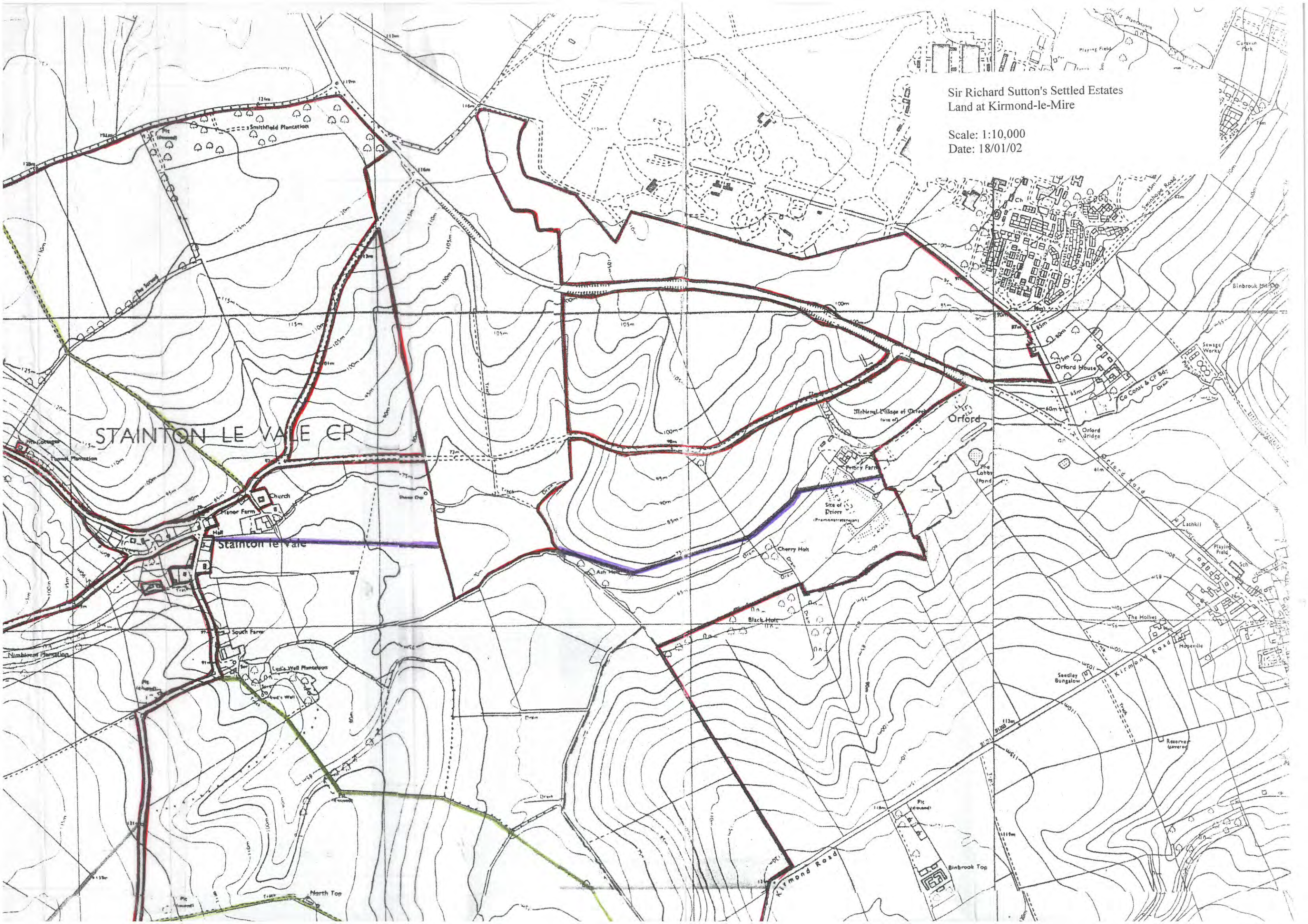


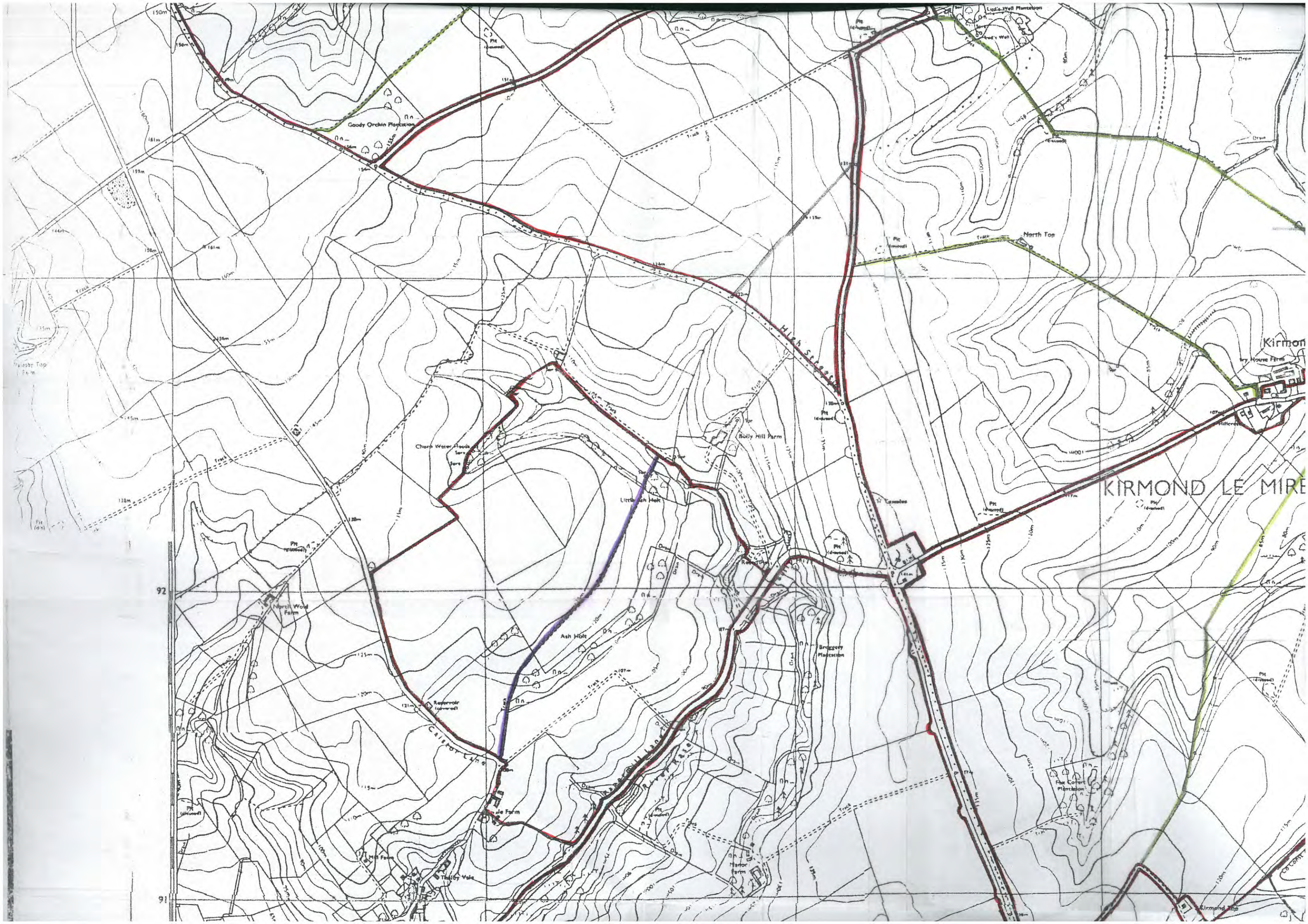
Timothy O'Malley



Sir Richard Sutton's Settled Estates
Land at Kirmond-le-Mire

Scale: 1:10,000
Date: 18/01/02





KIRMOND LE MIRE

92

91

150m

140m

130m

120m

110m

100m

90m

80m

70m

60m

50m

40m

30m

20m

10m

0m

Gaddy Orchin Plantation

North Ton

Bolly Hill Farm

Little Ash Hall

Ash Hole

Breggery Plantation

Reservoir (covered)

St. John's Farm

Kirmond

My House Farm

Palash Top

Ex. m.

Kirmond 250



Kirmond le Mire

KIRMOND LE MIRE CP

Binbrook Top

Burkinshaws Top

Thorp Top

North Top

Bully Hill Farm

Broggery Plantation

Sesley Bungalow

Reservoir (covered)

Kirmond Top

Kirmond Bottom

Blue Cohort Plantation

Co. Cork & Co. Cork

Co. Cork & Co. Cork

Co. Cork & Co. Cork

Co. Cork & Co. Cork

Co. Cork & Co. Cork

Co. Cork & Co. Cork

Co. Cork & Co. Cork

Co. Cork & Co. Cork

Co. Cork & Co. Cork

Co. Cork & Co. Cork

Co. Cork & Co. Cork

Co. Cork & Co. Cork

Co. Cork & Co. Cork

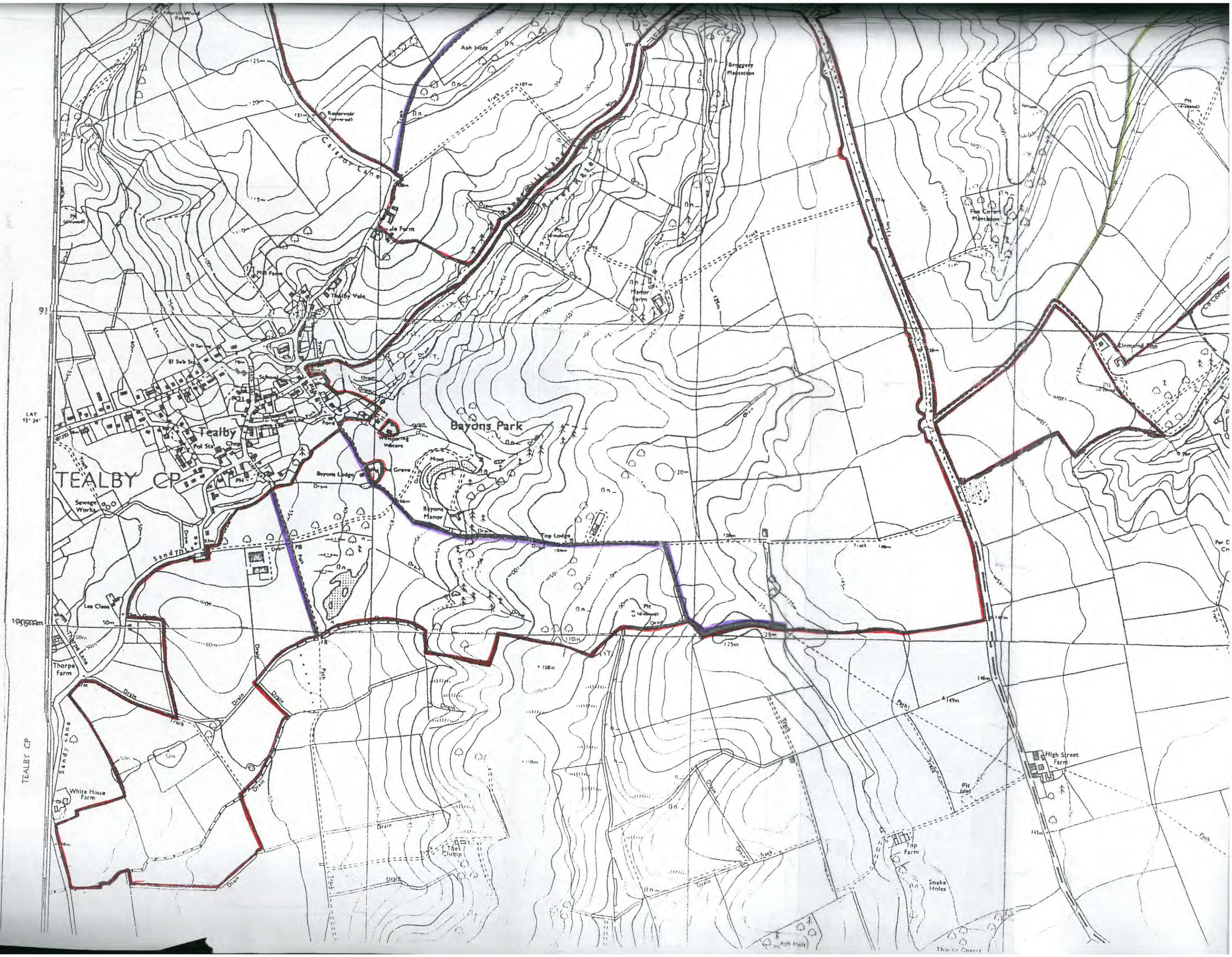
Co. Cork & Co. Cork

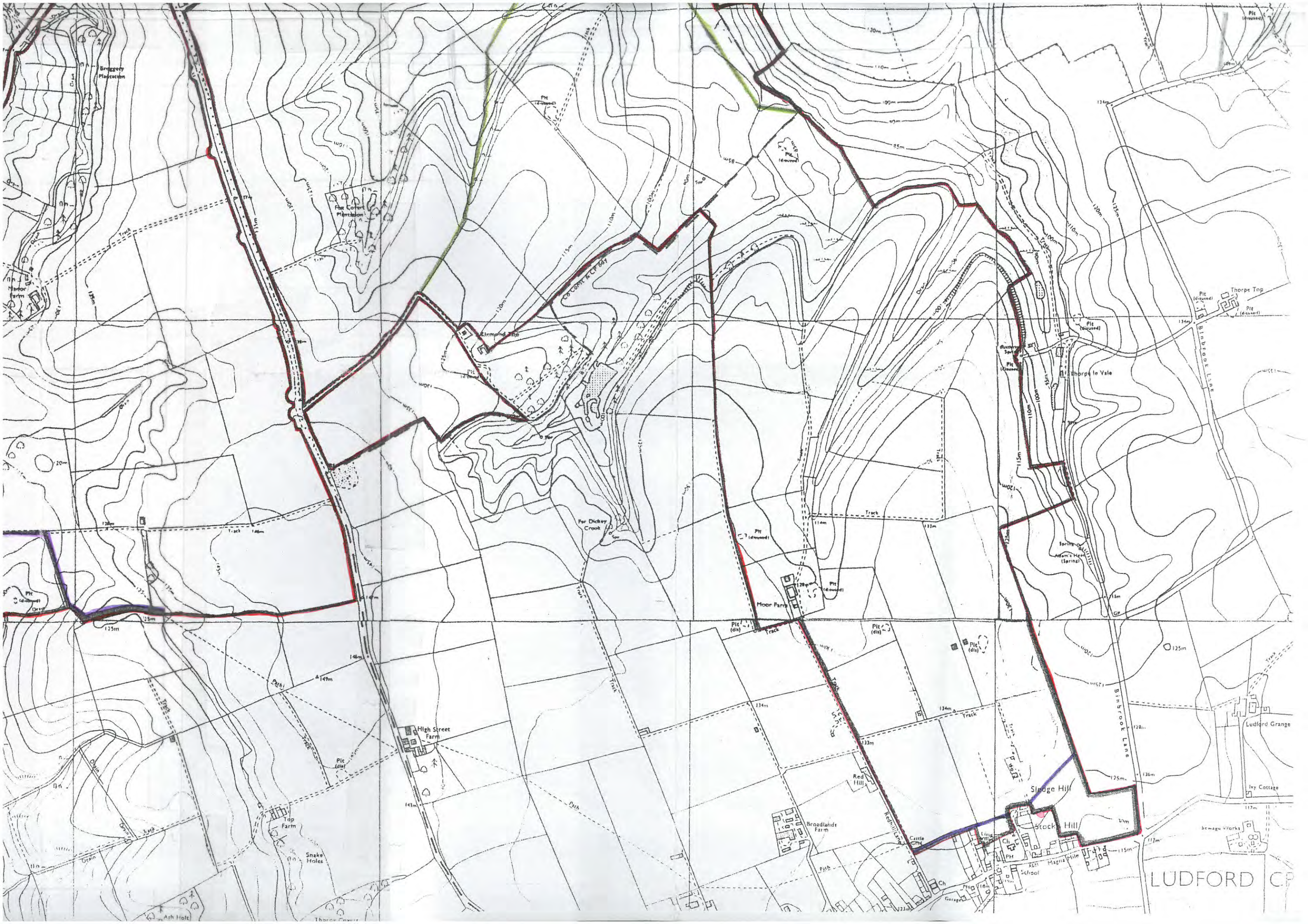
Co. Cork & Co. Cork

Co. Cork & Co. Cork

Co. Cork & Co. Cork

Co. Cork & Co. Cork





Briggley Plantation

Far Corner Plantation

Stimmed Top

Par Dickey Crook

Floor Farm

High Street Farm

Tap Farm

Snake Holes

Broadlands Farm

Sledge Hill

Stock Hill

LUDFORD CP

Ludford Grange

Ivy Cottage

Sewage Works

Thorpe Top

Thorpe la Yale

Spring of Adam's Nose (Spring)

Red Hill

Castle Hill

Magpie Hill

Garage

Pic (dis) Thorpe Top

Pic (dis) Thorpe Top

Pic (dis) Thorpe la Yale

Pic (dis) Thorpe la Yale

Pic (dis) Floor Farm

Pic (dis) Floor Farm

Pic (dis) Floor Farm

Pic (dis) Floor Farm

Pic (dis) High Street Farm

Pic (dis) High Street Farm

Pic (dis) High Street Farm

Pic (dis) High Street Farm

Pic (dis) Par Dickey Crook

Pic (dis) Par Dickey Crook

Pic (dis) Par Dickey Crook

Pic (dis) Par Dickey Crook

Pic (dis) Sledge Hill

Pic (dis) Sledge Hill

Pic (dis) Sledge Hill

Pic (dis) Sledge Hill

Pic (dis) Sledge Hill

Pic (dis) Sledge Hill

Pic (dis) Sledge Hill

Pic (dis) Sledge Hill

Pic (dis) Sledge Hill

Pic (dis) Sledge Hill

Pic (dis) Sledge Hill