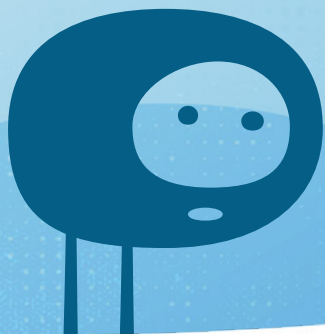


# Building Communities of Specialist Support Together in Lincolnshire



Lincolnshire  
Special  
Schools

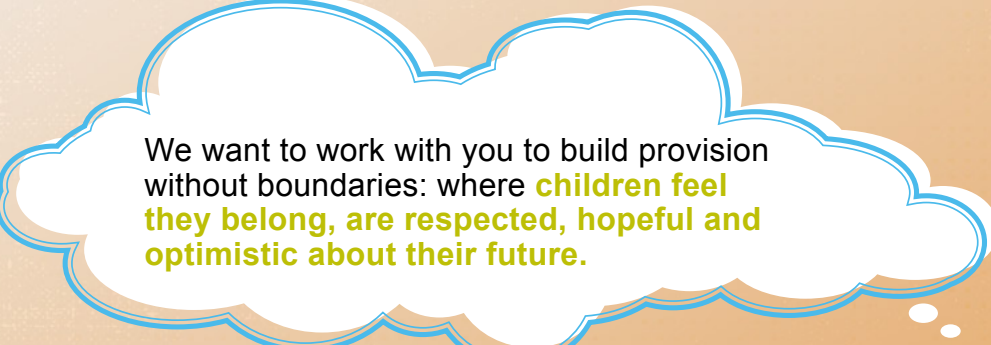


Lincolnshire Parent  
Carer Forum

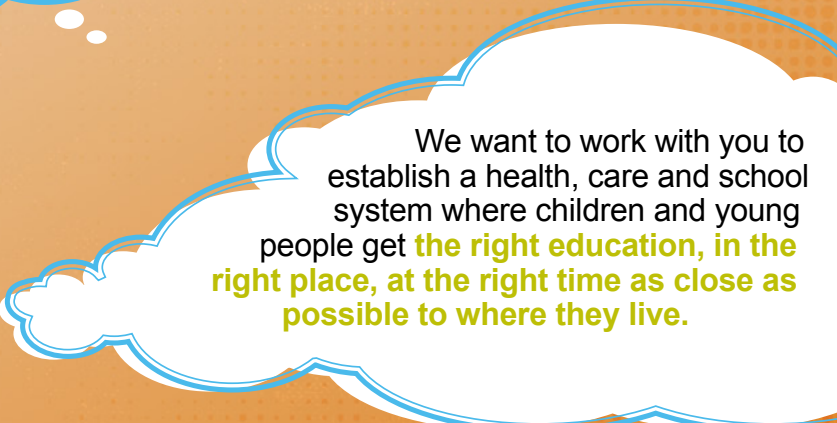
Lincolnshire  
COUNTY COUNCIL  
*Working for a better future*

# Working together in Lincolnshire...

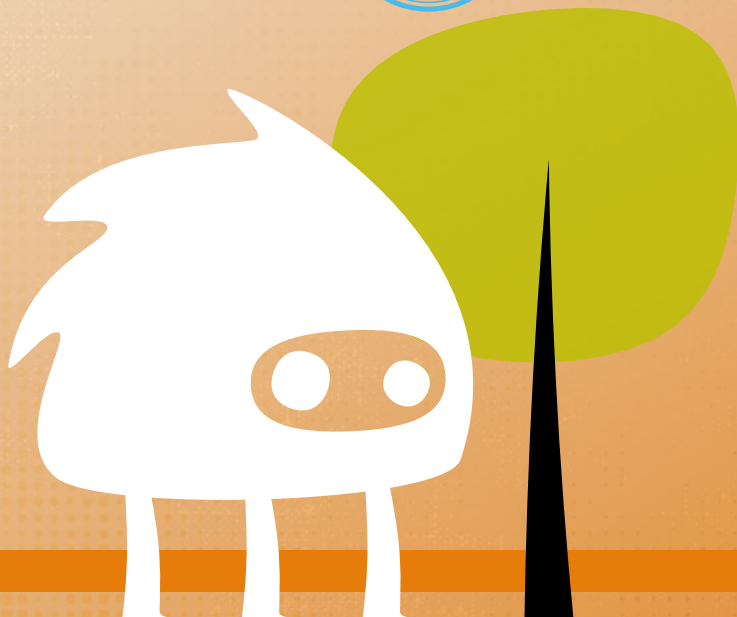
to enhance our current good  
and outstanding specialist  
education provision.



We want to work with you to build provision  
without boundaries: where **children feel  
they belong, are respected, hopeful and  
optimistic about their future.**



We want to work with you to  
establish a health, care and school  
system where children and young  
people get **the right education, in the  
right place, at the right time as close as  
possible to where they live.**

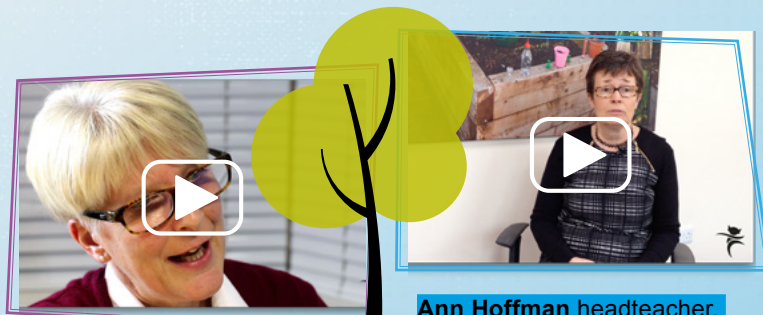


# Working together in Lincolnshire today...

Hear from the people who work  
with you and your children  
about the exciting opportunity  
to improve special school  
communities in Lincolnshire.



Click the play  
buttons to watch  
each video



**Sheridan Dodsworth**  
Children's Services manager,  
Special Educational Needs  
and Disability (SEND) Service



**Ann Hoffman** headteacher,  
St Francis School, Lincoln



**Coralie Cross** chairperson  
& **Rachel Rollinson** of the  
Lincolnshire Parent Carer Forum



**Debbie Barnes** Director of  
Children's Services



**Lea Mason** executive  
headteacher, Lincolnshire  
Wolds Federation



**Karen Dowman** team  
manager for children  
with disabilities



**Russel Outen-Coe**  
designated clinical officer,  
NHS South Lincolnshire CCG



# Working together in Lincolnshire today...



**210,383**

children/young people aged  
between 0 and 25 in Lincolnshire



**88**

children with  
SEND attend out  
of county special  
school settings

**20**

special schools  
in Lincolnshire

**12**

million  
miles

a year are travelled  
to and from school by  
special school pupils



That's equivalent to

**12.6**

return journeys  
to the moon!

**5.25%**

of children and young people  
attending special schools  
currently travel up to

**80**

Miles a  
day return



This can and often  
does mean a **daily**  
**journey** in excess of

**3 hours**

This is in direct contrast to their mainstream  
peers of whom **less than 2%** travel more than



**10**

Miles one way

**only**  
**523**

students (**30.11% - 3 in 10**)  
of those attending special  
schools attend their  
nearest school

# Working together

## right school, right time, right place...



We want your help so that your child can thrive in your local special school as part of your local community.

✓ Our aim is to **make your child's education the "best it can be"**.

✓ We want to achieve this through **improving provision for children and young people** with Special Educational Needs & Disabilities.

✓ Lincolnshire County Council, special schools and the Lincolnshire Parent Carer Forum are working in partnership, to **create community centred special school provision for your child**.

✓ Ideas are under discussion to shape services so that **school places are available at the right school, at the right time and in the right place**.

✓ We want a **collaborative system of special schools** that can meet most special educational needs and disabilities by being designated "all needs" and taking pupils of all ages.

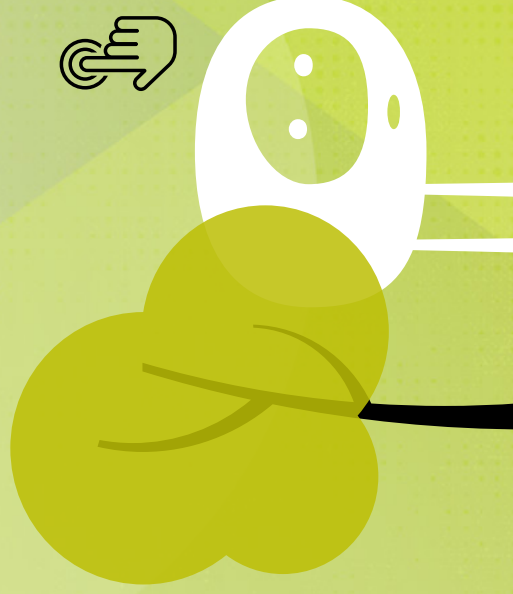
✓ The aim is to **have four localities** within the county which provide school places for SEND which are **more easily accessible to pupils** in terms of distance and travel time.

Where there may be proposals to change provision at a particular school, transitional arrangements would be put in place. We will endeavour to keep you informed at every stage.

Anyone interested in finding out more information or to help inform the proposals is invited to attend a consultation.



Click here to get in touch



# Working together we will...

Provide a local education system in which parents can have confidence that their child's education, health and care needs can be met.

Provide local community special schools which can meet the needs of all pupils in their community by removing the current barriers to access, particularly where schools can only meet the needs of pupils with specific designations of disability.

Enhance and build upon current provision.

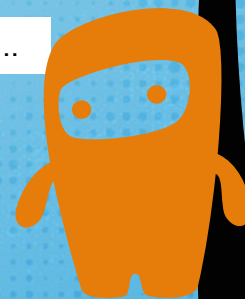
Develop a countywide plan that provides a united, equitable special school system across all localities in Lincolnshire.

Increase support to children and young people who are able to move successfully into mainstream school..

Reduce travelling distances for children and young people who attend special school provision..

Ensure parents, children and young people are at the heart of all SEND Provision.

Deliver a community of support, in your local area, amongst your friends and family.





# Our commitment to you ...

Lincolnshire SEND project – delivering accessible inclusive education in your locality through minimal travel, enhanced provision and increased number of places.



**Cllr Mrs Patricia Bradwell,**  
Executive Councillor  
for Children's  
Services

“ I believe that all children have the right to access education as near to their local community as possible and am fully committed to working with our schools and with parents to help realise this ambition.

All Lincolnshire schools strive to offer the right level of support to children and young people, but it's not good when mainstream schools can no longer meet the complex needs of some of our children. We all want our children to access high quality education which helps them to achieve their potential, as near to their local community and family as possible.

This strategy, supported through significant investment, will help us to achieve this.

I am pleased to confirm that the county council has committed

significant funding to this project which will enable us to develop the changes and the capital outlay required to put the proposed model in place. It is important that families have confidence that our special schools will be equipped to meet the wide ranging and complex needs of some of our children.

They are Lincolnshire children and they deserve the right education, in the right place with the right facilities and the right staff to help them to realise their potential. ”



**Click here to  
find out more**

# Find out more

If you have any further questions, or would like any more information on the plan please refer to the links/contacts below.



## Useful links

### Consultation details

[www.lincolnshire.gov.uk/SENDcommunications](http://www.lincolnshire.gov.uk/SENDcommunications)

### Lincolnshire Parent Carer Forum

[www.lincspcf.org.uk](http://www.lincspcf.org.uk)

### Liaise – SEND information, advice and support

[www.lincolnshire.gov.uk/liaise](http://www.lincolnshire.gov.uk/liaise)

E [SENDCommunities@lincolnshire.gov.uk](mailto:SENDCommunities@lincolnshire.gov.uk)

For details of individual school consultations click [here](#)



## Useful contacts

### Customer Service Centre

T 01522 552222

### Lincolnshire Parent Carer Forum

T 07925 232466

## Working with



Ash Villa School

Lincolnshire County Council

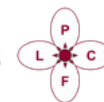


ATHENA  
SCHOOL

Eresby School



GOSBERTON  
HOUSE ACADEMY



Mayflower  
Specialist School Academy Trust

Pilgrim  
SCHOOL

THE SPALDING  
SPECIAL SCHOOLS  
FEDERATION  
Achieving Together

St Francis school  
committed to life long learning

