

# Early Years and Childcare Support

Service Plan  
2020—2022



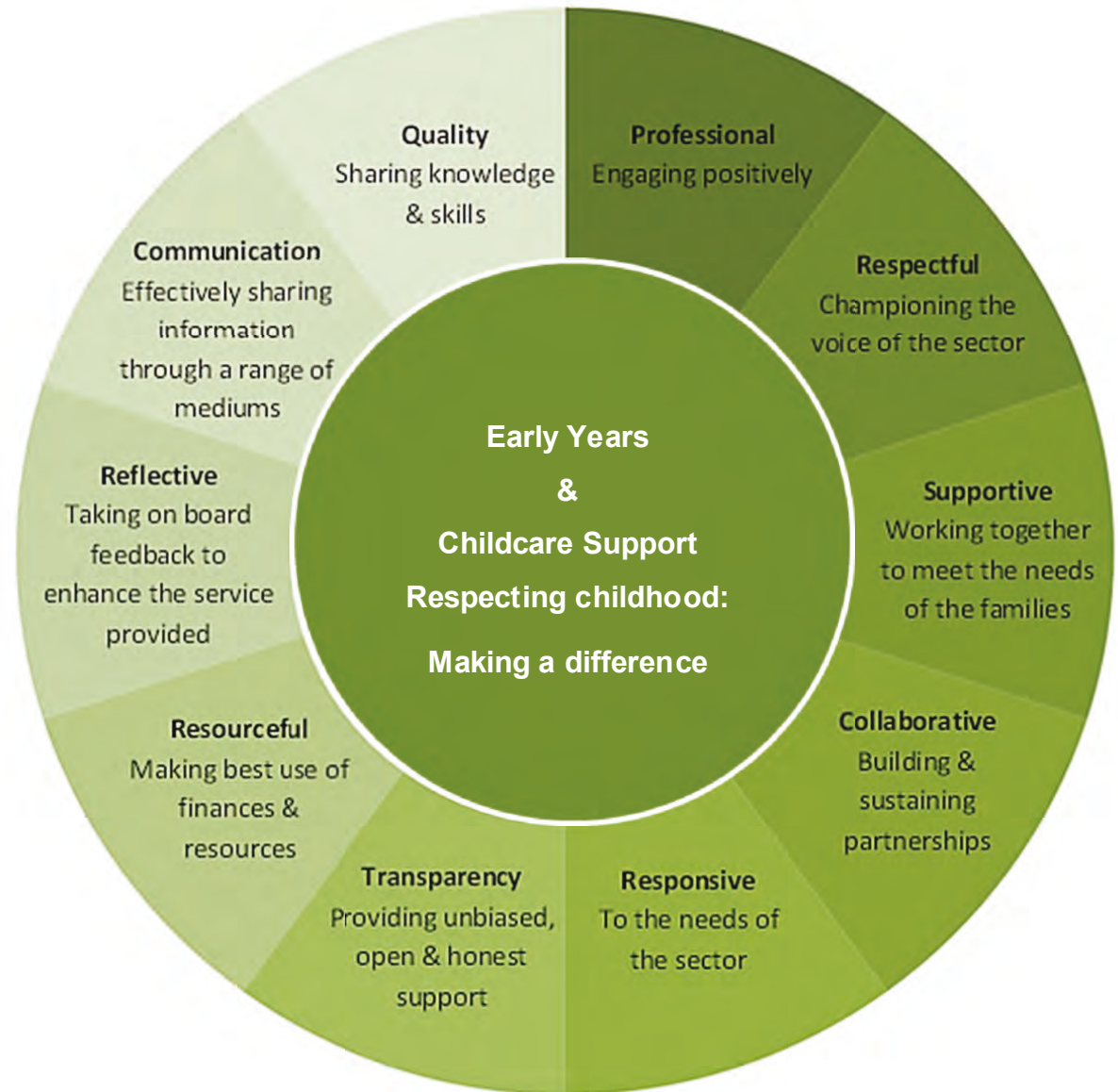


## Contents:

- 2 Contents and Values
- 3-4 Introduction and Overview
- 5 Putting Children First
- 6 Early Years and Childcare Support Business Offer
- 7 Service Priorities
- 8-10 Covid-10: EYCC Response
- 11 Children Centre's Contact Details
- 12 Useful Links / Supporting Documents
- 13 Glossary of Acronyms / Key Partners



## Service Values



### Definitions:

*Sector: All early years and childcare settings (0—14 years / 18 years for children with disabilities)*

*Workforce: Anyone working or volunteering within the early years and childcare sector, in any role*

## Early Years and Childcare Support

Lincolnshire's Early Years and Childcare Support service (known as EYCC) works with all early years and childcare providers to ensure the Local Authority meets its duties set out within the [early education and childcare statutory guidance](#) and other guidance regarding the delivery of high quality childcare, early education and Children's Centre provision across the county.

The service offers support and guidance along with access to training opportunities to all pre-schools, nurseries, day care settings, registered childminders, schools, academies and out of school clubs across Lincolnshire.

This work is set out across six key themes including:

- Funding and delivery of the Early Years Entitlements for 2, 3 & 4 year olds
- Provision of sufficient and sustainable early years and childcare provision for children aged 0-14 years (18 years for those with SEND)
- Support to ensure the delivery of quality childcare and early education provision across the county (within the relevant statutory framework)
- Professional development and provision of workforce training for the early years and childcare sector
- Delivery of SEND advice and support for children in their early years and the allocation of the Inclusion fund
- Promote and embed partnership working across our network of Children's Centre's ensuring quality and consistency of service delivery

The Early Years Entitlements offer up to 15 hours per week for eligible 2 year olds and all 3 and 4 year olds and up to 30 hours for working families. This can be accessed across 38 weeks or stretched to cover some holiday periods. Information regarding all childcare offers is available to parents through [Childcare Choices](#). The intention is for the 30 hours extended entitlement to have a real impact on the lives of families, supporting parents who intend to start work, or to work more hours.

The local authority has a statutory duty to ensure there is sufficient quality, affordable, accessible childcare provision available to meet this need and to support all parents to access work and training who have children aged 0-14 years (0-18 years for children with SEND). This requires capacity planning across Lincolnshire, especially for areas where childcare providers have already maximised places. EYCC continually monitors the market place and supports provider's to offer additional places where any sufficiency gaps are identified. Lincolnshire produces an annual childcare sufficiency report which offers an overview of the current sufficiency picture in Lincolnshire and the Local Authority priorities. The latest report can be accessed [here](#).

EYCC provides advice and support in order to ensure the effective delivery of the requirements of the Early Years Foundation Stage (EYFS) Framework. This enables the early years sector to meet the needs of all children.



Since September 2014, all new early years providers are able to register with the Local Authority to deliver the Early Years Entitlements upon opening. To underpin this, a programme of support is available to new providers to give them the best chance of achieving a 'good or better' Ofsted judgement at their first inspection, and thus maintaining a sufficient supply of good quality funded childcare places. There is a one to one targeted programme of support available to providers who receive an Ofsted judgement of less than good at their first or any subsequent inspections.

Lincolnshire's Early Years Training Directory offers access to a comprehensive programme of high quality courses that assist the sector to fulfil EYFS and [Ofsted](#) requirements, and to maintain high quality provision, all of which are offered at subsidised rates and bookable online via Eventbrite.

Since 2017 Lincolnshire's outcomes at the end of the foundation stage have dipped below the national average; in response to this a new strategy has been developed to set out our ambitions for the future. There is a particular emphasis on supporting the most disadvantaged and vulnerable children, in order to reduce inequalities and promote the school readiness agenda.

Lincolnshire's approach is to provide a range of early years services that are accessible to all parents from antenatal to post-natal support, though to advice on child development including how young children learning through play. All this contributes to preparing a child for learning and to have a successful transfer in to school then going on to achieve at least the expected level of development by the end of their reception year. Lincolnshire provides these support services through our network of 48 Children's Centres; 8 of which are Maternity Hubs and at outreach from venues across the county (see page 12 for contact details). The Children's Centre hub team work with a range of statutory partners, commissioned partners and agencies to ensure the Lincolnshire Children's Centre Core Offer is delivered across the county. The work of Maternity Hubs and Children's Centres is the first part of the early years journey. Once children reach the term after their second birthday they may be eligible to access funded education as part of the government's commitment to support families living in low income households. Lincolnshire provides additional funding locally to ensure all children looked after access their early years entitlement from the date of their second birthday, please click [here](#) for more information on children looked after in Lincolnshire.

The early years inclusion funding supports the government's strategy of enabling early intervention and removing barriers to learning faced by children with SEND. All Local Authorities were required to establish an SEN inclusion fund as soon as practicably possible on or after April 2017. This provides additional funding on a named child basis to support children who meet the criteria set out as part of Lincolnshire's SEND Local Offer. For our most vulnerable children and families in greatest need, support is provided through the early help and specialist support services. Information can be found within the Putting Children First document which gives more information on how professionals can work collaboratively to better meet the needs of children and families in Lincolnshire.

If you would like more information about services offered please contact the team on 01522 552752.





# Putting Children First

All children should be well supported to be ready for school. Our aim is that across Lincolnshire:

## Children will be given every opportunity to:

- grow, develop and be healthy
- play, have fun, socialise and access their early years entitlement
- embrace learning and get the most out of going to school
- have their needs met at the right time in the right way

## Parents and care-givers will be supported to:

- be healthy and well before, during and after pregnancy
- positively embrace parenthood and bond with their child
- enable their child to grow, play and learn
- know how and when to access services and support, to meet their own and their child's needs

## Services will be enabled and equipped to:

- use evidence informed practice
- have well trained and supported staff
- work collaboratively to ensure children, their parents and care-givers are at the heart of how we plan and deliver services
- maintain a key professional wherever possible

*This approach reflects the UNICEF principles that school readiness is achieved by communities and services working together for all our children giving them the best opportunity to thrive.*



# Early Years and Childcare Support

## Respecting Childhood: Making a difference

Engage and empower early years & childcare providers to deliver high quality early education and care, that meets the needs of Lincolnshire families, improving the outcomes for their children

### Our core business

Our integrated team of qualified early years and childcare professionals work together to:

- Advise, support and empower providers to deliver high quality early education and care
- Secure & maintain sufficient early years and childcare places
- Manage and monitor the delivery of EYE Funding
- Support the delivery of sustainable and affordable provision
- Update and inform on local and national policy
- Drive consistency in practice by providing a high standard of training for the sector
- Promote inclusive practice through the delivery of inclusion funding, support and guidance (SEND)
- Provide moderation and quality assurance in relation to EYFSP
- Promote Lincolnshire Children's Centres

### Our offer

We provide a breadth of experience and knowledge

We offer providers:

- Face to face delivery
- Telephone support
- Access via self-referral
- Access to support tools & guidance documents
- Training and professional development opportunities
- Advice and guidance on funding
- Professional group networks
- Professional support and challenge
- Consultancy services
- Negotiation and mediation services
- Support via email
- Online resources
- Website
- Social media
- E-newsletter

### Our aims

Through our support and delivery, our aim is that we:

- All value the unique child
- Contribute to improved outcomes for children
- Inspire Providers to flourish
- Support affordable, flexible and accessible, quality early years and childcare provision across local communities
- Strive to have all Lincolnshire Providers to have an Ofsted grading of 'good'
- Support the increase in the number of Lincolnshire Providers with an Ofsted grading of 'Outstanding'
- Promote an ethos of continuous reflective improvement
- Champion effective leadership
- Maintain sufficiency of childcare

\* Some activities were dependent on Covid-19 restrictions

**SP Target 1**

Embed the understanding of the new Ofsted Education Inspection Framework (EIF) to support all providers to achieve the best possible outcome at their next inspection

**SP Target 2**

Engage providers/schools academies and partners in a sector led improvement approach to embed effective transition arrangements to better prepare children for school

**SP Target 3**

Work with Early Adopter schools and prepare the sector for the full implementation of the Early Years Foundation Stage reforms ahead of September 2021

**SP Target 4**

Implement the DfE Professional Development Fund (PDF) for Lincolnshire in partnership with the Education Development Trust (EDT)

**SP Target 5**

Deliver training and support to all providers registered to deliver EYE funded places, to ensure the effective use of the Early Years Hub to return accurate data to the local authority

**SP Target 6**

Work with a range of professionals to promote the benefits of 2 year old entitlement. To increase the numbers of eligible children accessing provision in areas of low take up

**SP Target 7**

Work in partnership with Lincolnshire Teaching Schools Together (LTT) as set out within the Lincolnshire educational improvement plan known as the "One Plan"

**SP Target 8**

Revise and implement the programme of support available for all providers, prior to Ofsted registration and those newly registered, to ensure best use of resources



## Service Priorities

September 2020—September 2021

## Early Years & Childcare

## Respecting childhood Making a difference

**SP Target 9**

Launch and embed the Early Childhood strategy across the wider system to support improved early years outcomes for all children

**SP Target 10**

Continue to develop and deliver a good quality, affordable and accessible training programme, using a range of delivery methods that meets the needs of the early years sector

**SP Target 11**

Take a systems approach to maximising access to Lincolnshire Children's Centre services for families

**SP Target 12**

Review and update the Early Years JSNA chapter periodically through joint working across the system to inform local decision making

**SP Target 13**

Implement the recommendations outlined by the Local Government Association (LGA) Peer Challenge undertaken in November 2019

**SP Target 14**

Undertake analysis of the data collected as part of the deprivation funding monitoring process to inform and promote best use of resources

**SP Target 15**

Better support early identification of needs by developing shared pathways and approaches to enhance working relationships

**SP Target 16**

Ensure a robust sufficiency assessment and delivery plan is delivered annually to ensure sufficient childcare is available for children and families in Lincolnshire

# Covid-19

## Responding to the pandemic: EYCC

The biggest priority for 2019 was to develop a strategy to set out the wider work across the system with regard to supporting children and families through those earliest years of parenthood, from pregnancy to the time when a child leaves their reception year at school at the end of the Early Years Foundation Stage (EYFS). This was to ensure our children had the best chance possible of achieving their expected outcomes. This work has been completed and the Early Childhood Strategy has now been approved by the Children and Young People Scrutiny Committee. This will be the foundation of our work across the wider system going forward.

However there is much recognition that the demand and priorities of 2020 have been focused on supporting the sector through the coronavirus outbreak. As the national position changed in response to the pandemic, there was a recognition that the childcare market place is an essential part of both the national and local economy, providing access to high quality early education and childcare, enabling parents to access work. This has highlighted the importance of childcare and the need to maintain sustainable provision for key workers during the lockdown phase.

In Lincolnshire, we have a large number of small business providers who responded to the call to action from a moral perspective rather than from a financial position. There is much uncertainty at this current time however the service is committed to providing information, support and guidance in order that all Lincolnshire early years and childcare providers feel supported.

The next two pages set out some examples of the work undertaken by the service during the response phase of the pandemic, and the subsequent wider reopening of services. The work has been set out in three sections to enable the team to use our resources as effectively as possible.

- **Quality improvement and practice**
- **Strengthen partnerships**
- **Sustainability and business**

While the sector continue to respond to the changing landscape it is important that the service works collectively to identify the way forward in to the recovery planning and delivery phase to ensure the stability and sustainability of the sector.

Moving forward we need to ensure there is sufficient, quality, sustainable provision to ensure children can access their early years entitlement, and parents can access childcare to enable them to access work and training.





## Quality Improvement and Practice

- Responded to larger than usual volume of calls and emails from the sector, with regards their COVID-19 related queries and concerns
- Team supported with making additional telephone calls to the sector particularly with regards to children with Inclusion needs
- Ensured that the inclusion funding process continued to provide additional support to those children who needed it during lockdown
- Made calls to providers to collect data with regards to the attendance of early years children with Education Health and Care Plans to feedback to DfE
- Devised learning at home activity leaflets for children with additional needs at the request of social care colleagues
- Developed virtual SENCo forums in the summer term to support providers with transitions for children with additional needs
- A package of advice and support developed for schools around meeting the unique needs of the 2020 reception cohort
- Redesigned the paediatric first aid course to minimise contact with others yet still meeting Health & Safety E requirements of 6 hours face to face training
- E-learning training offer developed in partnership with NDNA and made available to all staff
- Early Years Alliance supported with a universal 'Ready Steady Go To School' offer
- The internal learning and development training offer is currently being adapted and developed to support future virtual delivery

## Covid-19

### Responding to the pandemic



### Strengthen partnerships

- Regular emails and daily Facebook posts to alert the sector to national and regional news in relation to Covid-19, sector requirements under the EYFS and personal well being
- Working with LSCB colleagues to pilot virtual Designated Safeguarding Lead briefings
- Partnership with LSCB training team renewed to ensure safeguarding training continues to be available to the sector—training adapted to be delivered virtually
- Lincolnshire maternity hubs remained open to ensure pregnant women could continue to receive antenatal care in a safe environment near to their home
- In addition to the maternity hubs other children's centres offered access to essential antenatal appointments
- Joint sessions on health and wellbeing from EYA and Healthy Minds Lincolnshire

## Sustainability and Business

- From April 2020 our commissioned partner Early Years Alliance have been delivering a virtual offer using Zoom. This was developed to conduct online group sessions with parents and children as part of the Best Start Early Years and Family Service Children's Centre contract
- The offer included early year's sessions such as Rhyme Time, Movers and Shakers, Growing Talk, Learning Together and Stay and Play, and for 1:1 family support work with families
- LCC have worked in partnership with our commissioned services throughout lockdown to provide virtual and face to face support for families and will continue to do so throughout the recovery phase
- Design and deliver virtual training sessions for providers that focus on the financial impact of covid-19
- Supported new childminder registrations on an individual basis through a virtual offer to replace face to face briefings
- Purchased 6 webinars from NDNA that focused on the impact of Covid-19:
  - ◇ *Covid 19: Traumatic Situations*
  - ◇ *Covid 19: Supporting Staff Well-being and Grouping*
  - ◇ *Covid 19: Settling New Children and Parents*
  - ◇ *Covid 19: Preparing Nursery - Indoor & Outdoor Activities*
  - ◇ *Covid 19: Infection Control*
  - ◇ *Covid 19: Staff Induction & Reopening*

- Leadership & Management briefings adapted to be delivered via Microsoft Teams
- Head of Service and Training Team—developed and distributed updates using social media
- Virtual sessions delivered to allow the sector to come together to discuss the impact of COVID-19 – these included Listening Clinics and Forums to support settings with re-opening and ensuring continuation of good Early Years education and practice
- EYSTs developed a transition package for schools and settings
- Getting To Good and Targeted Improvement meetings resumed by use of virtual platform to monitor Ofsted actions and inform sustainability decisions
- A series of short video clips produced to share tips around developing a love of reading
- A virtual consultancy offer developed and shared with schools
- Centres have been prioritised for the Children's Health Service to provide the 6-8 week mandated check as part of the Healthy Child Programme (HCP)



- Joint antenatal Q&A sessions have been delivered in partnership between midwifery and EYA other professionals have been invited to participate where a topic has been identified
- The Early Days virtual groups have been implemented to support parents who have given birth during Covid 19. The groups are facilitated by EYA and the 0-19 Childrens Health Service
- Early Years Alliance, 0-19 Children's Health Service, Maternity Voice Partnership and PAB Language service have collaborated on the offer during lockdown
- Keyworkers were supported to access a childcare place by offering a brokerage system to enable them to continue their vital roles



- Lockdown newsletter introduced to keep professionals and parents informed of any new legislation, government changes and updated advice
- Implement top up payments in the Autumn term following DFE guidance based on previous years occupancy levels
- Virtual working to be able to progress service priorities and support to the sector such as tenders, leases projects and business support sessions
- A privacy notice for virtual sessions was developed so data could be collected on new families taking up the offer
- Monitoring of live sufficiency position for all stakeholders in line with DFE reporting giving confidence in Lincolnshire's sufficiency position and analysis of uptake of places at any given time to implement the market management function





## Childrens Centre contact details

|   |  |   |  |   |  |
|---|--|---|--|---|--|
| <b>Boston North</b><br>1. <a href="#">Boston</a><br>2. <a href="#">Carlton Road</a><br>3. <a href="#">Old Leake</a>                                       | 01522 843135<br>01205 355056<br>01205 872258                 | <b>Lincoln Central</b><br>18. <a href="#">Lincoln Central</a><br>19. <a href="#">Bracebridge</a><br>20. <a href="#">Abbey</a>                             | 07770 620054<br>01522 525610<br>01522 555689                 | <b>South Kesteven South</b><br>36. <a href="#">South Witham</a><br>37. <a href="#">Bourne</a><br>38. <a href="#">Stamford</a><br>39. <a href="#">Market Deeping</a>                                 | 01572 768876<br>01778 395895<br>01780 764072<br>01778 382574                 |
| <b>Boston South</b><br>4. <a href="#">Sutterton</a><br>5. <a href="#">Swineshead</a>  | 01205 461509<br>01205 820331                                 | <b>Lincoln South</b><br>21. <a href="#">Birchwood</a><br>22. <a href="#">North Hykeham</a><br>23. <a href="#">Witham Priory Family Centre</a>             | 01522 689991<br>01522 550927<br>01522 554886                 | <b>West Lindsey Gainsborough</b><br>40. <a href="#">Gains Market Arcade</a><br>41. <a href="#">Hemswell</a><br>42. <a href="#">Sturton by Stow</a><br>43. <a href="#">Gains North Marsh Road</a>    | 01427 617767<br>01427 667643<br>01427 788971<br>01522 550318                 |
| <b>East Lindsey Coastal</b><br>6. <a href="#">Skegness</a><br>7. <a href="#">Alford</a><br>8. <a href="#">Mablethorpe</a><br>9. <a href="#">Wainfleet</a> | 01522 555652<br>01507 463218<br>01507 479412<br>01754 880500 | <b>North Kesteven South</b><br>24. <a href="#">Sleaford</a><br>25. <a href="#">Billinghay</a><br>26. <a href="#">Caythorpe</a>                            | 01529 306888<br>01526 869248<br>01400 279285                 | <b>West Lindsey Rural</b><br>44. <a href="#">Market Rasen</a><br>45. <a href="#">Binbrook</a><br>46. <a href="#">Caistor</a><br>47. <a href="#">Welton</a><br>48. <a href="#">Cherry Willingham</a> | 01673 844703<br>01472 398889<br>01472 398880<br>01673 862767<br>01522 595980 |
| <b>East Lindsey North</b><br>10. <a href="#">Louth</a><br>11. <a href="#">Holton le Clay</a>  | 01507 607087<br>01472 828548                                 | <b>North Kesteven North</b><br>27. <a href="#">Waddington</a><br>28. <a href="#">Washingborough</a><br>29. <a href="#">Witham St Hughs</a>                | 01522 722170<br>01522 796166<br>01522 869541                 |   |  |
| <b>East Lindsey South</b><br>12. <a href="#">Spilsby</a><br>13. <a href="#">Horncastle</a><br>14. <a href="#">Tattershall</a>                             | 01790 753451<br>01507 526603<br>01526 343858                 | <b>South Holland</b><br>30. <a href="#">Spalding</a><br>31. <a href="#">Crowland</a><br>32. <a href="#">Holbeach</a><br>33. <a href="#">Sutton Bridge</a> | 01775 767475<br>01733 211609<br>01406 426064<br>01406 359327 |   |  |
| <b>Lincoln North</b><br>15. <a href="#">Lincoln North</a><br>16. <a href="#">Carholme</a><br>17. <a href="#">St. Giles</a>                                | 01522 544801<br>01522 526558<br>01522 529631                 | <b>South Kesteven North</b><br>34. <a href="#">Grantham Belton Lane</a><br>35. <a href="#">Grantham Swingbridge</a>                                       | 01522 550901<br>01476 590034                                 |   |  |





## Useful links

- [Ofsted](#)
- [Department for Education \(DfE\)](#)
- [Childcare Choices](#)
- [Family Information Service](#)
- [Family Services Directory](#)
- [Single point of access](#)
- [PACEY](#)
- [NDNA](#)
- [Early Years Alliance](#)
- [NARIC](#)
- [Information Commissioners Office](#)
- [Early Years Foundation Stage Forum](#)
- [Health & Safety Executive](#)
- [HMRI](#)
- [Disclosure & Barring Service](#)
- [RIDDOR](#)
- [Public Health England](#)
- [Safer Food Better Business](#)
- [The Nursery Milk Scheme](#)
- [Childcare Works](#)
- [Childminding UK](#)
- [Government Gateway](#)
- [Health Visiting Service](#)
- [Qualification Checker](#)
- [Early Education](#)
- [The Communication Trust](#)
- [ERIC—The Childrens Bladder & Bowel Charity](#)
- [PEOPLE](#)
- [Foundation Years](#)
- [Pupil Premium—What Ofsted looks for](#)
- [Charity Commission](#)
- [Foundation Years](#)

## Supporting documents / guidance

- [Statutory framework for the early years foundation stage Setting the standards for learning, development and care for children from birth to five 2017](#)
- [Working Together to Safeguard Children Statutory framework: legislation relevant to safeguarding and promoting the welfare of children](#)
- [Working Together to Safeguard Children A guide to inter-agency working to safeguard and promote the welfare of children](#)
- [Childcare Bill: Policy Statement 2015](#)
- [Early Education and Childcare Statutory guidance for local authorities 2018](#)
- [Early Years Entitlements: Operational Guidance for Local Authorities and Providers 2018](#)
- [Delivering The Early Years Entitlements in Lincolnshire 2017](#)
- [Early years: Guide to the 0 to 25 SEND Code of Practice 2014](#)
- [Lincolnshire County Council Childcare Sufficiency Report June 2017](#)
- [Early Years Workforce Strategy 2017](#)
- [Development Matters in the Early Years Foundation Stage \(EYFS\)](#)



## Acronyms used within early years

- LCC—Lincolnshire County Council
- EYCC—Early Years & Childcare Support
- EYFS—Early Years Foundation Stage
- PVI—Private, Voluntary & Independent
- EYE—Early Years Entitlement
- CC—Children's Centre
- DfE—Department for Education
- SEN—Special Educational Needs
- SEND—Special Educational Needs & Disability
- WTT—Working Together Team
- JSNA—Joint Strategic Needs Assessment
- S & L—Speech & Language
- EP—Educational Psychology
- SEST—Sensory Education Support Team
- EHC—Education & Health Care
- FS—Foundation Stage
- DLA—Disability Living Allowance
- DAF—Disability Access Funding
- EYFSP—Early years Foundation Stage Profile
- EYP—Early Years Practitioner
- EYTS—Early Years Teacher Status
- QTS—Qualified Teacher Status
- CSTM—Children's Services Team Manager
- EYST—Early Years Specialist Teacher
- EYLL—Early Years Locality Leads
- LAC—Looked After Children
- SCF—Supported Childcare Funding
- EYPP—Early Years Pupil Premium

## Key Partners

- [Lincolnshire Safeguarding Children Partnership](#)
- [Education Psychology Team](#)
- [Children's Centres](#)
- [Edulincs](#)
- [Range of Independent Training Providers](#)
- [Health Visiting Team](#)
- [Better Births Lincolnshire](#)
- [Early Support Care Co-ordination \(ESCO\)](#)
- [Adult Learning—2aspire](#)
- [LCC SEND Team](#)
- [Working Together Team](#)
- [Portage](#)
- [Virtual School](#)
- [Ethnic Minority and Traveller Education Team](#)
- [LCC Performance Team](#)
- [LCC School Admissions Team](#)
- [Bookstart](#)





Early Years & Childcare Support  
Lincolnshire County Council  
Myle Cross Centre  
Macaulay Drive  
Lincoln  
LN2 4EL

Direct Line: 01522 552752

<https://www.lincolnshire.gov.uk/early-years-education>



*Acknowledgement:*

*Many thanks to the EYCC team for their involvement in the development of this document, for their input during consultation meetings and their enthusiasm in making this team the best it can be for children in Lincolnshire*

facebook

Early Years & Childcare Support

Lincolnshire  
COUNTY COUNCIL  
*Working for a better future*